

ROBERT
EDSON
SWAIN

ARCHITECTURE
+
DESIGN

D*esign For Place*

www.robertedsonswain.com

Robert Edson Swain, Inc.

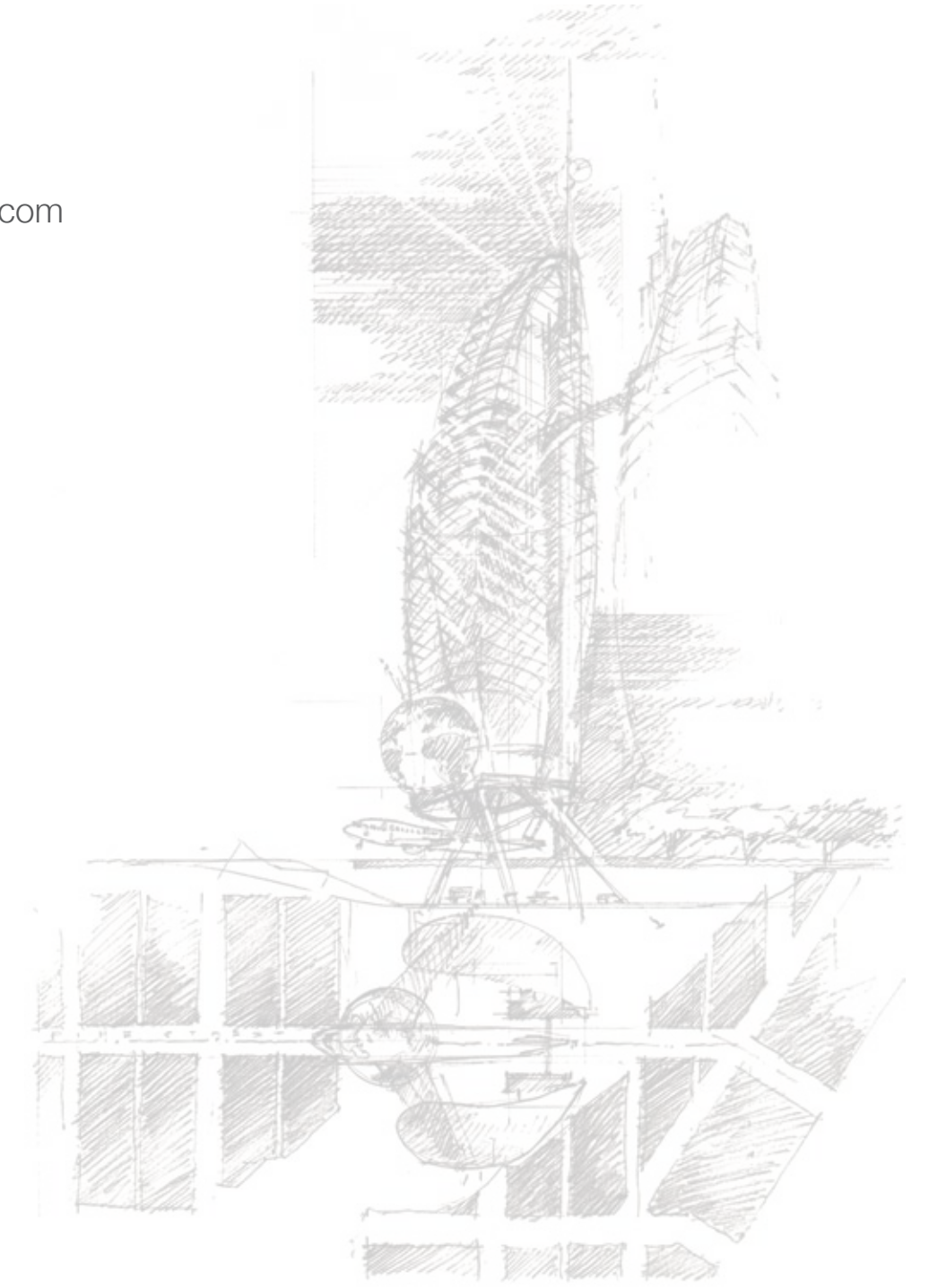
2300 West Commodore Way STE 201

Seattle WA 98199

206.784.4822

bob@bobswain.com

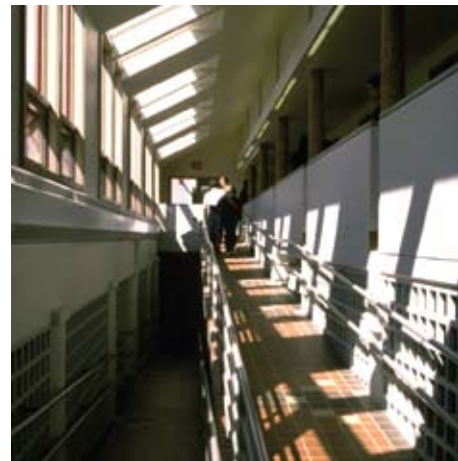
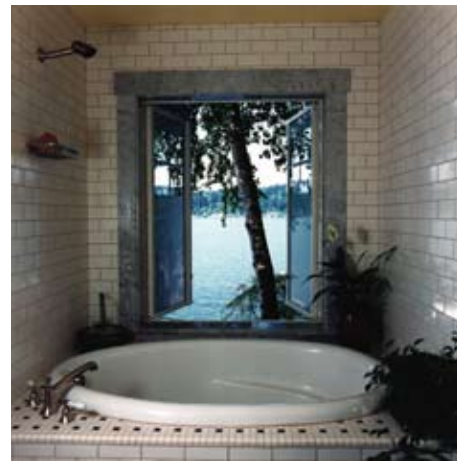
ROBERT
EDSON
SWAIN





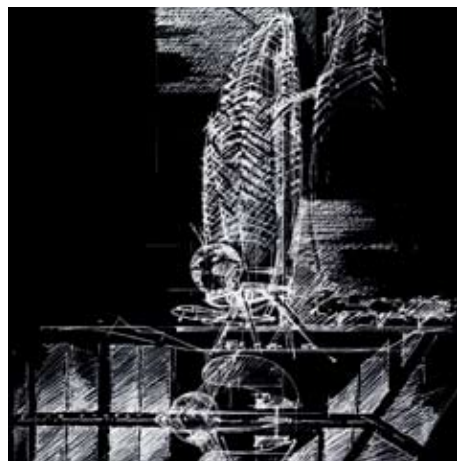
Every spirit builds itself a house, beyond its house a world, beyond its world a heaven. Know there that the world exists for you – build therefore your own world.
 – Ralph Waldo Emerson

Design For Place



Introduction: place, context, and integrity

The extent to which a person recognizes or recalls a particular place distinct from others is a measure of the identity, or sense, of that place. Often contemporary architecture strives for “beauty” in whatever willful or whimsical mode the individual designer brings to the project, without genuine regard for the experience of those who will use the place. But when the experience is fundamental to buildings and landscapes a sense of place can be achieved where the individual is more likely to identify with the place and to feel that he or she belongs there. Sense of place is cultivated by the mutual fit of physical form and behavior, by the integration of activities and physical surroundings, and it results in a special harmony between user and space. Thus, we must look at place and person together.



Sense of Place: Coherence and Character.

Coherent space is visually understandable to the user. But the coherence does not mean the monotony of a simple repeated pattern. Pattern only becomes interesting when it attracts and engages the user, when it is simultaneously both complex and orderly enough to be readable and understandable. There are two other notable aids to coherence: one is smallness and the other is hierarchy. Breaking large places down into smaller more intimate spaces precludes boredom and alienation. Street arrangements that do this well (as in historic villages and international markets) give each space its own feeling of place within the larger context. A clear hierarchy of parts is essential to making sense of the environmental pattern. Dominant elements in any pattern act as visual and functional clues that help users relate minor parts to each other and to the whole. Character is an essential part of the experience of place. When we visit a foreign city or region of the United States we are struck by its individual character. Character, derived from regional cultural sources, is determined by the physical nature of a place. What is the scale of the dominant buildings containing the space? What vernacular architectural idiom appears? What materials are used? How high is the space, how wide? How are secondary elements – such as columns, windows, and lighting – detailed? Character depends on how elements

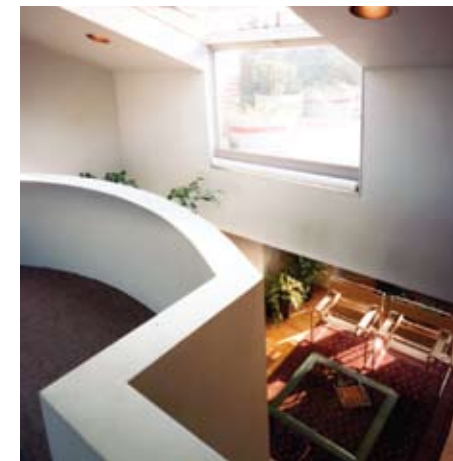
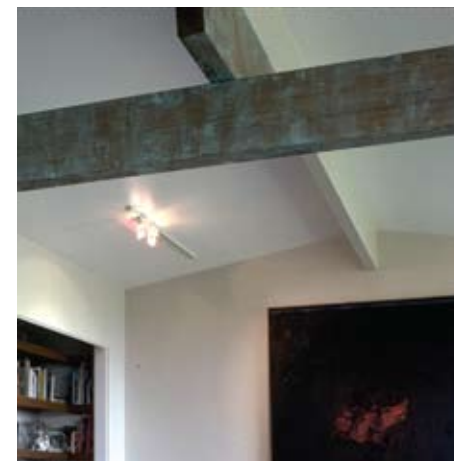
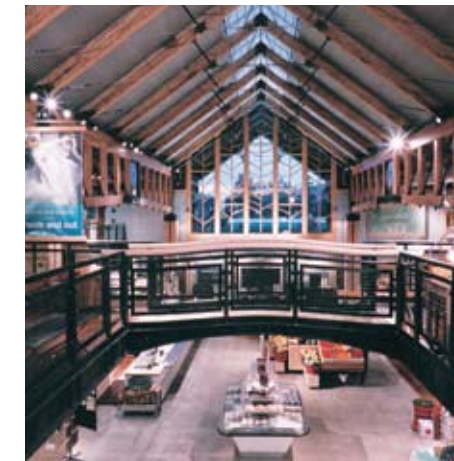
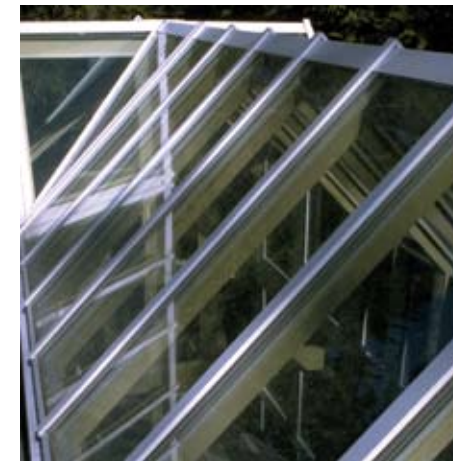
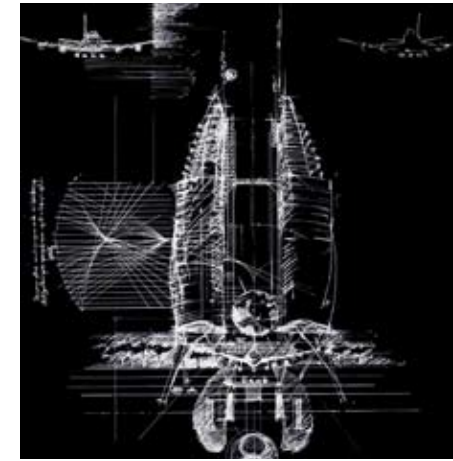
are put together and how they help to articulate the form of the building and landscape.

Context

Contextualism is the design response to a building or garden’s surroundings and community. This can be a response to neighboring buildings – through height, setback, shape, massing, and scale; it can occur in response to the street and to the public – through its use of proportion, materials, articulation of openings, use of color, and street landscaping. Contextual architecture is based on respect, not on ego or elitism.

Integrity

Integrity in architecture means truthful expression through an honest use of structure and materials. Its inspiration is a forthright and practical expression. It is timeless, having a historical understanding of architecture, and it combines collective knowledge with contemporary technology. It does not mean following the latest architectural fashion trends. Buildings and landscapes are enduring commitments not stylistic whims – even as they embrace the particular spirit of the recent.



Robert Edson Swain — Biography

Robert Edson Swain has been lead Architect on more than 500 projects ranging in scale from a new city master plan in China and an interior for a private Boeing Jet, to commercial buildings and private residences.

If Robert Swain’s architecture + design practice can be summarized in a single description, it is this: designs that are magical yet gratifyingly practical, developed with sincere respect for place and user. He engages his clients and team in a joyful process to achieve deeply pleasing conclusions. Innovation is consistent yet always practical, and his designs have always been environmentally respectful, long before Green Design was fashionable.

From his heritage in New England boat building to his passion for Italian design, Mr. Swain has developed a unique ability to transcend traditional architectural solutions. He has received numerous international, national and regional awards for the design of schools, housing, interiors, retail spaces, along with site responsive architectural, urban design and city-planning projects. His work is applauded for its integration of classic and innovative design ideas with contemporary building technology.

Mr. Swain’s diverse portfolio includes: City planning projects in Ningguo and Huaibei both cities in Anhui China; as well as winning a global

competition for the design of a new city in Shandong China — Lang Ya City a satellite of Qingdao — a 100 square kilometer coastal zone for industry and tourism; to the detailed interior design for the Boeing 737 Business Jet — a project that encompasses his respect for tradition and his passion for innovation.

Mr. Swain’s love for Italian design was founded in a formal design education from Istituto Universitario Di Architettura, Venice, Italy where his awareness of exquisite detail deepened while studying with Carlo Scarpa and Nani Valle. The Architect Louis Kahn was a primary personal influence in the decision to study in Italy. Mr. Kahn imparted a sense for the integrity of materials and their use, as well as a strong clarity of building systems During studies at the University of Arizona, in a region where the work of Frank Lloyd Wright is prominent, Mr. Swain developed his sense for the integration of architecture with nature... “design emerges from and is responsive to an intimate familiarity with the site and its environs.”

As an educator he has affiliations with universities in the United States, Latin America and Europe. He served as Full Professor of Architecture at the Seconda Università di Napoli (S.U.N.), Naples, Italy and as Affiliate Professor in the Department of Engineering at the University of Washington

Domus BBJ (Boeing Business Jet)
Design Competition
📍 Milan, Italy



focusing on design process, teamwork in design, industrial design and inventive adaptation of materials for sustainable living. He has also taught in the University of Washington’s Lifelong Learning Program. He currently serves and has served as architectural and environmental design Guest Lecturer and Design Critic at Universidad Nacional Autonoma de Mexico (UNAM), Universidad del Diseno Facultad de Arquitectura y Urbanismo Costa Rica, the University of Washington, Western Washington University, Conway School a Masters in Landscape Design, the Massachusetts Institute of Technology, Harvard University, Boston Architectural Center and the

University of California at Berkeley. As Architectural Design Critic in Residence, at the University of Nebraska, he has taught in association with Professor Dale Gibbs, FAIA.

Mr. Swain currently serves and has served on various corporate and non-profit boards: International Council on Ecopolis Development, www.intecopolis.org, a global group committed to Green City Development; Pratt Fine Arts Center www.pratt.org, dedicated to promoting creative development and artistic engagement to the local and global community, Seattle WA; Bellevue Arts Museum www.bellevuearts.org, the Pacific Northwest’s center for the exploration of art, craft and design, Bellevue, WA; Rhodes Architectural Stone, an international leader in antique and hand-crafted masonry products based in Seattle, WA; as a longtime trustee of the Conway School of Landscape Design www.csld.edu in Conway, Massachusetts; and, a trustee of McKinnon’s Neck Conservation Trust in Nova Scotia, Canada.

Mr. Swain’s work is distinguished by applying the design process as a primary tool for exploring and articulating a project’s resource and creative potential. He provides his visionary design consultation skills in numerous scenarios, from the intimate settings of residential projects, to large-scale urban-planning projects, as well as, to the boardrooms of global corporations.

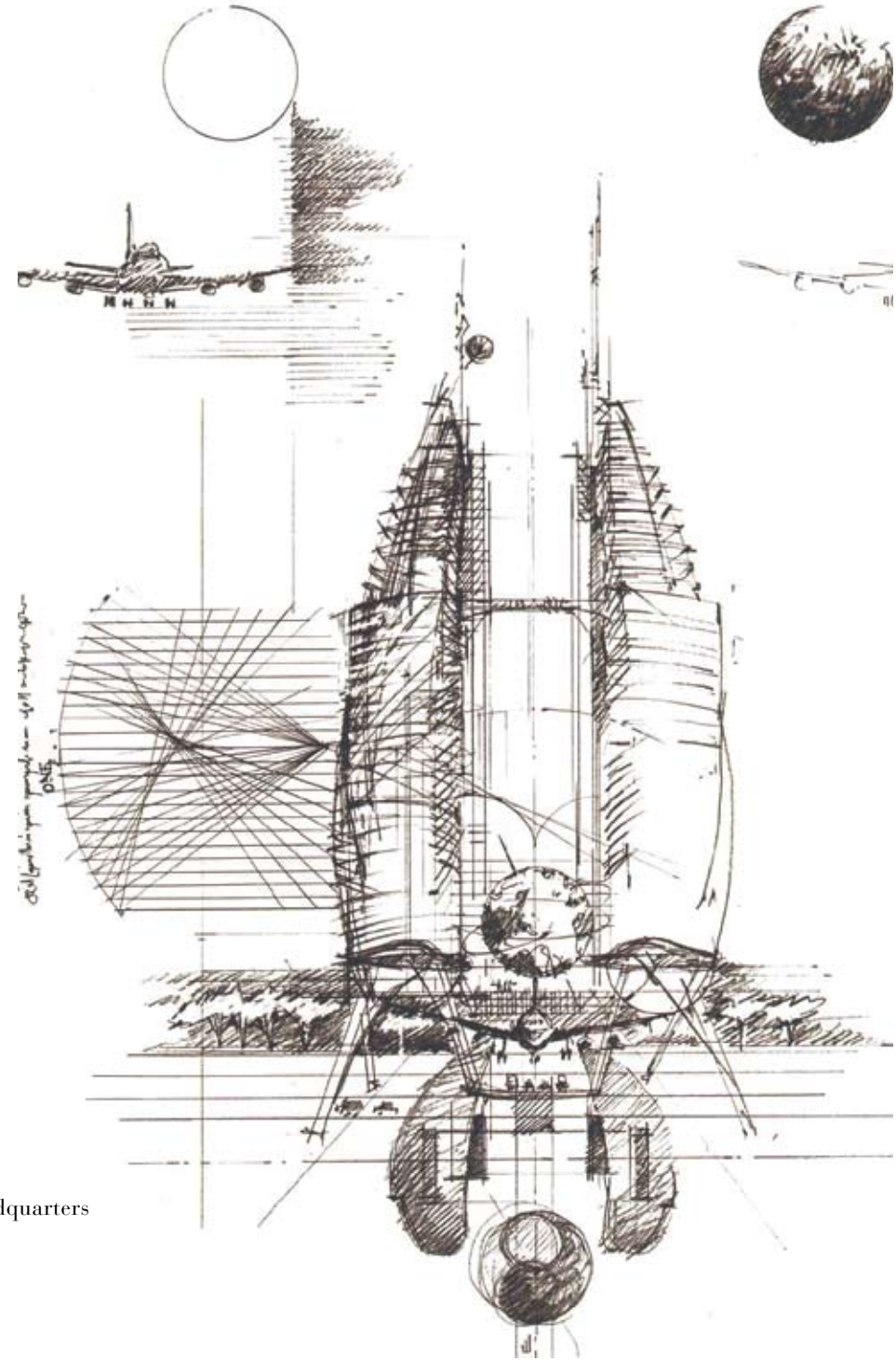
Design For Place

DESIGN APPROACH

We embrace the complex challenge of design and are proud to have produced the vast array of work offered in this presentation. Good architecture and landscape designs demonstrate cultural and environmental integrity. They are forthright and practical, as well as

aesthetically inspired. Commitment to the spirit of invention and integrity are essential. We walk the edge of conceiving and realizing environments that serve needs while remaining conscious of environmental sustainability.

⊙ Proposed Boeing World Headquarters
Seattle, WA



Riverbend Office Park ⊙
Watertown, MA

The goal of sustainability is to generate economic, ecological, social and intellectual benefits. Sustainability, which fulfills the desire of people for an ever better quality of life while protecting valuable resources, must be oriented to the future. This approach is rapidly gaining importance in our communities and industries, and brings with it a vast potential for growth.





Ⓞ Phinney Ridge Project
Seattle, WA



Clear communication is the basis of successful design. The ability to focus, to look and listen, and to absorb — without preconception — what a given setting and a particular client express. Collaborative teams contribute skills and creative spirit to express true joy in functional beauty. Our collaborative approach stresses learning as a life-long commitment. It goes beyond the classroom and must be engaged by professionals throughout their careers. The natural energy of enthusiasm brings joy to the process of design, engages the client, inspires the design team, and sustains the positive experience to project completion. We push and are pushed to achieve, relishing the process and celebrating the results.



Northeastern Mortgage Company Headquarters - Cambridge, MA Ⓞ



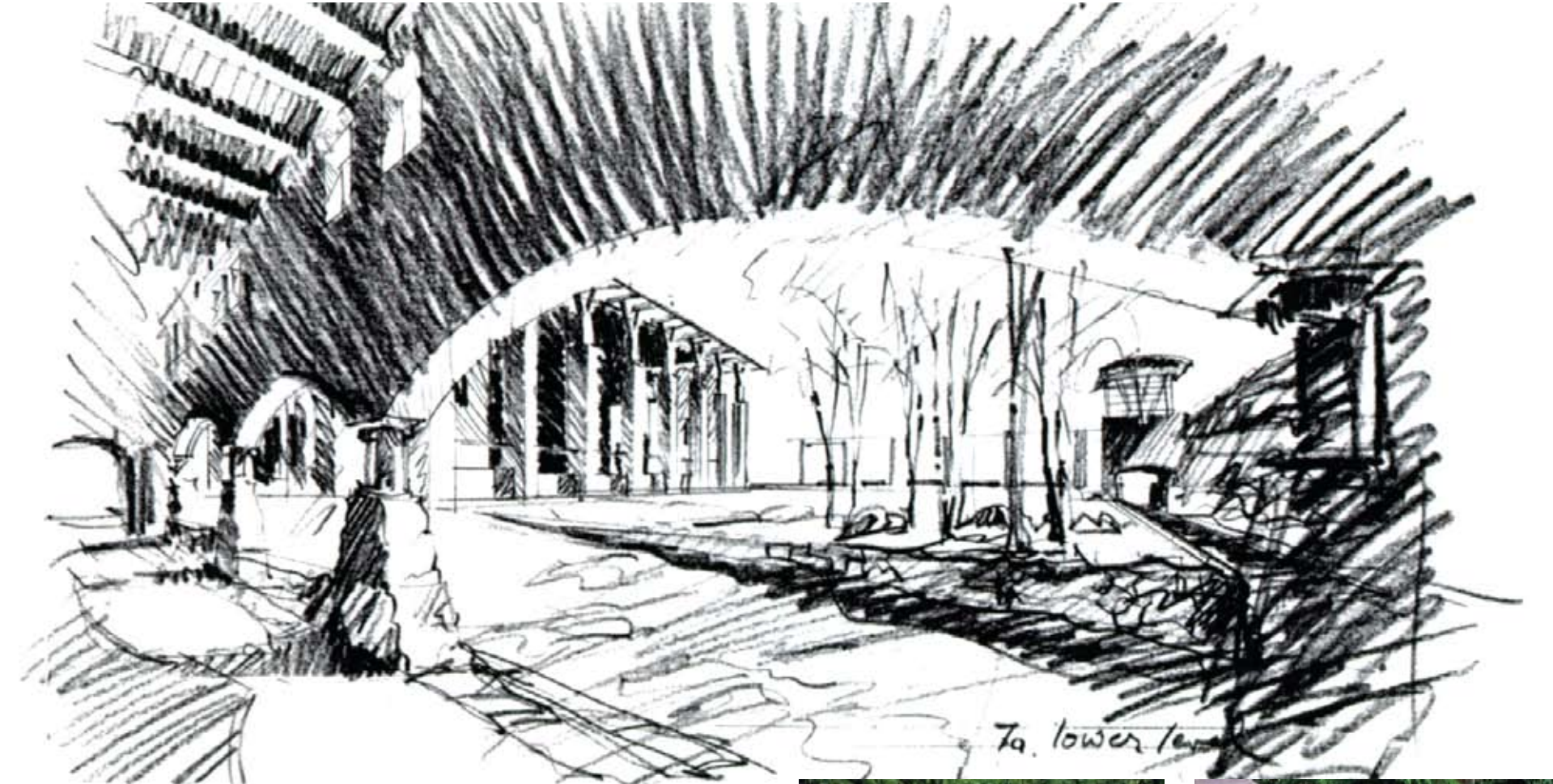
“Bob couples boundless energy with architectural brilliance. His designs demonstrate an incredible integrity both in structure and in surroundings.”

– Stuart Johnson. GID Multiple Projects, Boston, MA



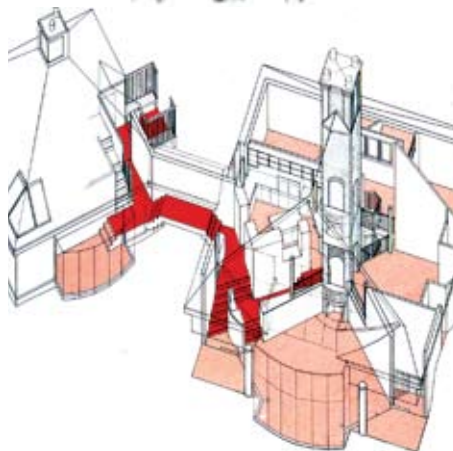
7 upper level

Krone Properties ☺
Business Research Center
Redmond, WA



To lower level

Krone Properties Business Research Center ☺
Redmond, WA



Phinney Ridge Project ☺
Seattle, WA





Hall Estate
Mixed Use Development
65 Acres
☉ Hull, MA

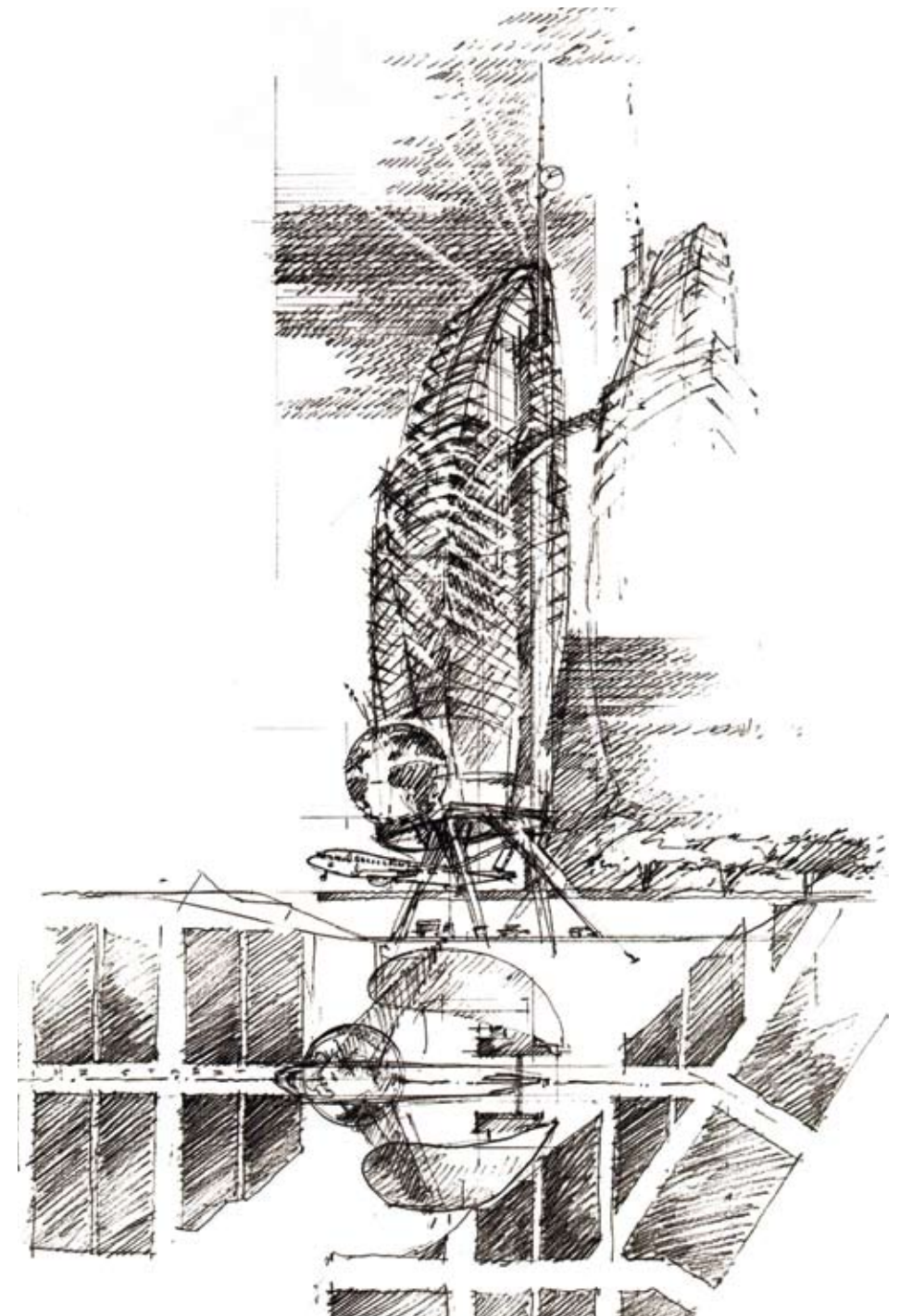
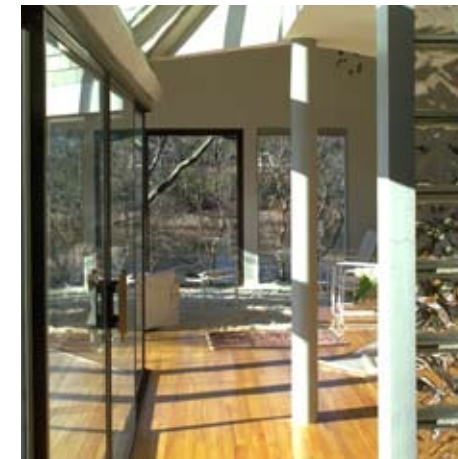


“After many projects with Bob, I still reel from the brilliance of his simple, beautiful solutions to complex problems. He is the best there is.”
– Brad Wagstaff. *Old Inn on the Green, New Marlborough, MA*

North Shore Music Theatre
☉ Beverly, MA



Proposed Boeing World Headquarters
Seattle, WA ☉



Design For Place

Mixed-Use

Recreation

Office

Retail

Hospitality

Housing

We believe the issues of place, context, and integrity are essential to community definition. Creativity combines these attitudes with the functional demands of a market. It is what transforms buildings into architecture and locations into places. Successful form-giving is evolutionary, a deliberate and mutual process that is constantly reflected upon and questioned by both architect and client.

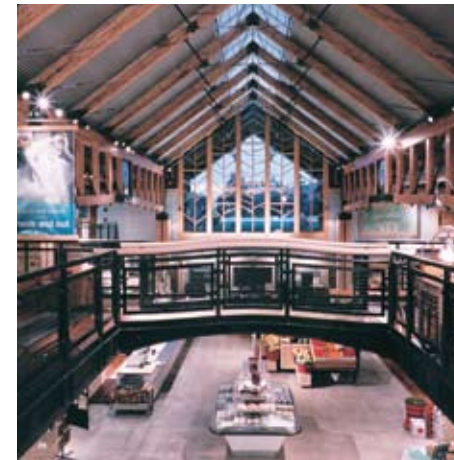


Bay Farm Village ⊙
Duxbury, MA

“The design is simple yet elegant; the building is perfect for its environment; it truly belongs to the community.”
– Lidio Rainaldi. *Medical/Dental Center, Gallup, NM*



Samoset at Winnepesaukee ⊙
Gilford, NH



⊙ Nature's Northwest
⊙ Portland, OR

Franklin Pierce College ⊙
Rindge, NH

North Shore Music Theatre ⊙
Beverly, MA





⊙ Riverbend Office Park
Watertown, MA

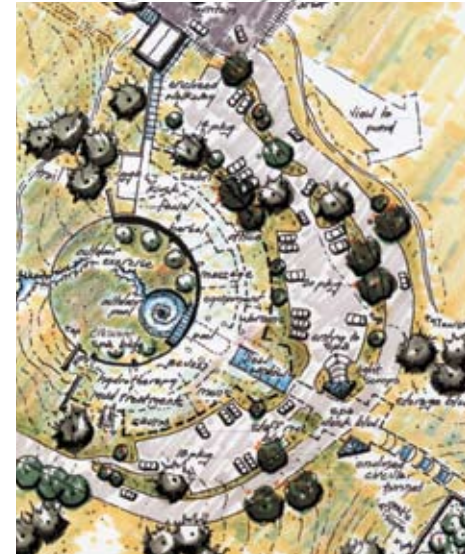
A new, innovative mixed-use design puts to rest outmoded patterns of development. The design expresses the concept of a New England coastal village. Working closely with the developer, public relations firms and the town, the design has received town approval, even in an environment of skepticism toward development.



Franklin Pierce College ⊙
Rindge, NH



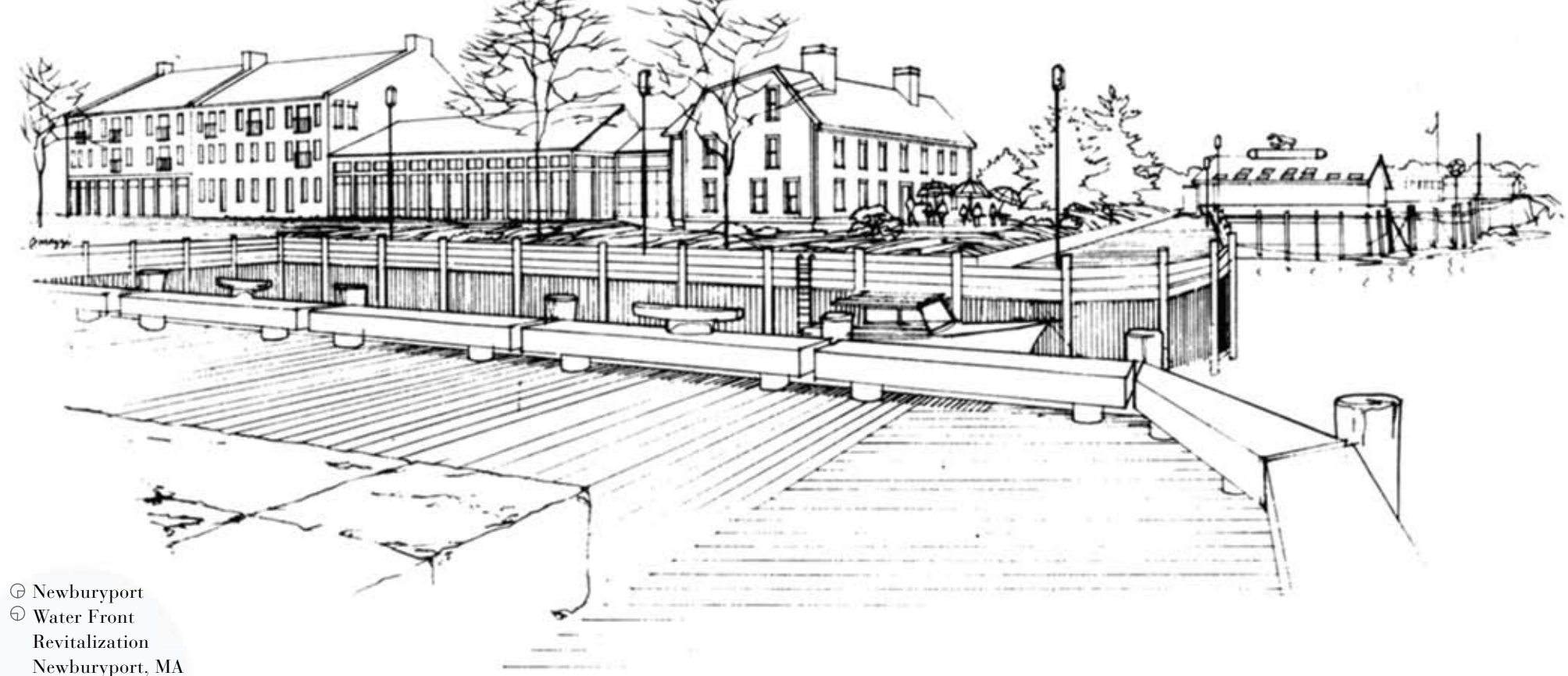
The Hall Estate - Hull, MA ⊙



"[Robert Edson Swain, Inc.] respects and understands the integrity of New Hampshire, its culture and its land. From large office condominiums to single-family homes, the proper integration of form and context produces buildings and landscapes that work in harmony with their environment. Careful manipulation of space, light, and views brings a sense of joy and delight to every design."

Swain expertise in project coordination lends clarity to the design from concept through construction. Their experienced management helps to develop a coherent, workable design. Throughout construction, efficiency in time and cost is promoted to streamline the entire project to fit a limited budget."

New Hampshire Business Review, June 1983



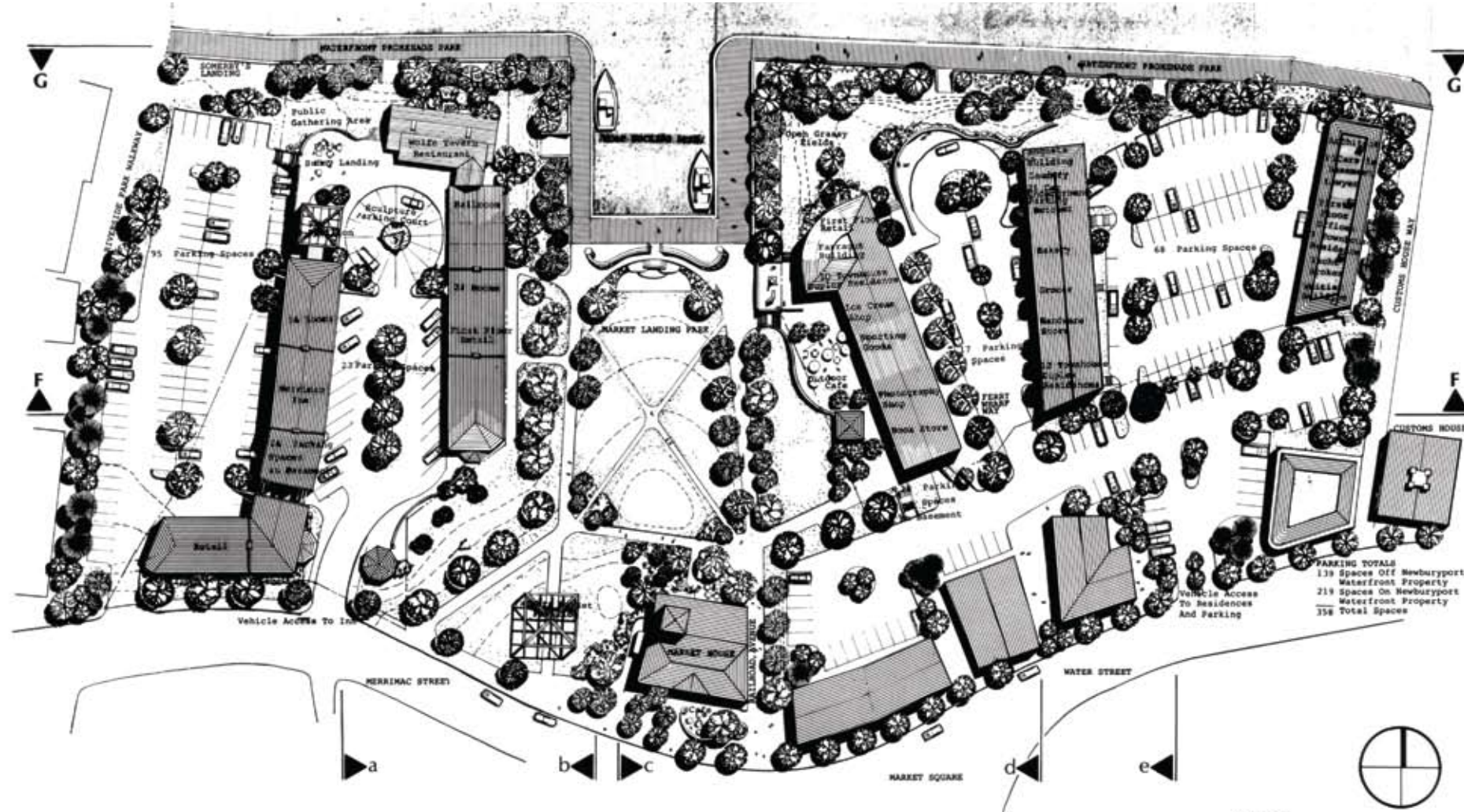
⊕ Newburyport
 ⊕ Water Front Revitalization
 Newburyport, MA

MIXED-USE

We recognize that the architecture of mixed use development must go beyond conventional attitudes, beyond the purely functional, into a realm of imaging to create mixed use development with enduring impact rather than mere style.

The resulting form must be a response not only to the needs of the community it serves, but also to the subliminal needs and aspirations of the individual user.

Newburyport
Water Front
Revitalization
☉ Newburyport, MA



RIVERBEND OFFICE PARK

Watertown, Massachusetts

Situated on the banks of the Charles River in Watertown Square, Riverbend Office Park is the careful renovation of a turn-of-the-century brick building to 100,000 square feet of dynamic commercial space. A tempered 3-story atrium “street” organizes circulation within the building, minimizing the need for corridors and maximizing rentable space. Glass elevators, balconies and bridges fill the atrium with a lively quality. Daylight spills through interior glazing into the offices, creating dynamic, light-filled work environments with views to the atrium.



Samoset at Winnepesaukee
☺ Gilford, New Hampshire



The main estate home is a series of buildings, walls, and landscape elements. The central element includes formal living rooms. Behind the central building two wings complete the house, the east wing is the primary family quarters while the west wing supports the family business. Both structures are designed as elevated Grand Loggias (the primary living space on the upper levels) open along the full length of each wing for maximum sunlight and spectacular views of the Cascade Mountains.

The large north courtyard is reminiscent of an Italian outdoor room. The walls of the courtyard and formal garden hold back the earth and wilderness allowing the watercourse to become the focus of this space. As you move out beyond the house a 1 1/2 mile carefully designed trail leads you through the woods and bridges of the site.

A meandering driveway enters through a mature canopy of cedars and firs, then descends, skirting the edge of a wildlife pond. The drive then climbs through a reforested slope with occasional glimpses of the house beyond.

DAYSPRING FARM

Redmond, Washington





© Skok Systems, LTD.
Cambridge, MA

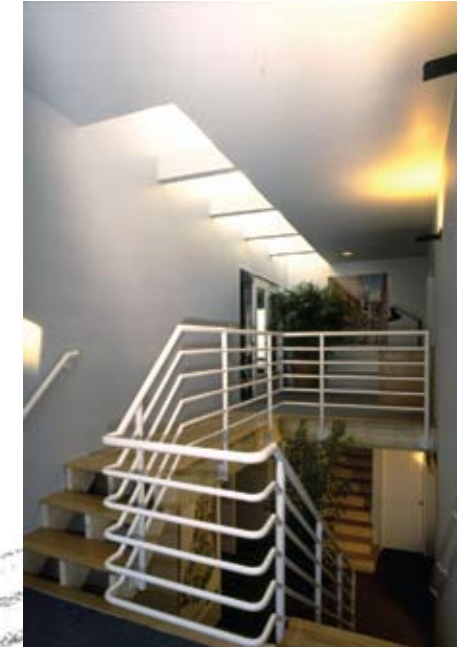
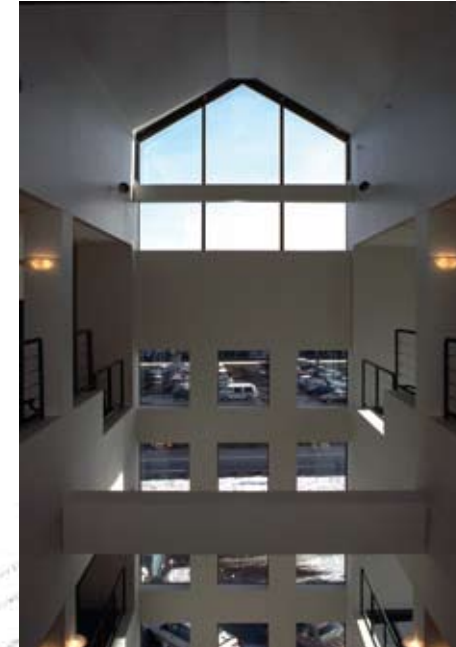
SKOK SYSTEMS, LTD.

Cambridge, Massachusetts

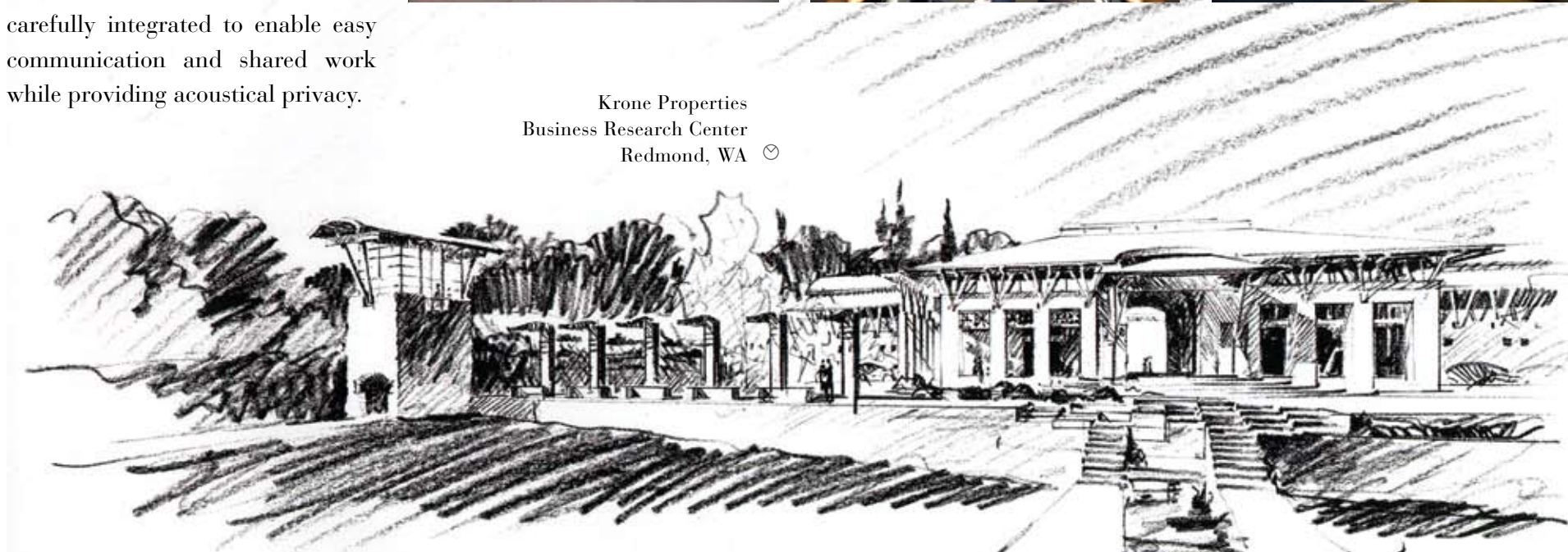
SKOK Systems' headquarters is designed to meet the complex requirements of a designer and producer of Computer Aided Design and Drafting (CADD) systems. The original wood and brick structure and innovative design solutions are artfully blended, defining discreet zones for diverse activities.

© Nature's Northwest
Portland, OR

A hands-on training room, visible to the visitor, is enclosed by a gracefully curved wall of mahogany trimmed windows, an echo of those in the historic facade. High-ceilings in the sophisticated audio-visual demonstration rooms provide spacious accommodation for exhibiting SKOK's state-of-the-art computer programs. Open plan areas and interior window walls are carefully integrated to enable easy communication and shared work while providing acoustical privacy.



Krone Properties
Business Research Center
Redmond, WA ☺



RECREATION



Recreation in Mixed-Use Planning

Site: 65 acres of land, including upland and marsh, on the Weir River in Hull, MA. Site Coverage: 15%, land coverage; 85% preserved open space.

Program: Mixed-use development of 270 residential units and 20,000 square feet of commercial space. Residential units include 175 clustered townhouses, 91 units in mixed-use commercial/residential development and the rehabilitation of the Hall Residence to 4 units. Parking and amenities include nature walk, playing fields, canoe dock, and Village Common with park.



McKinnon's Neck Conservation Trust
200 Acre, 4 miles of coastline
preservation ☹
Nova Scotia, Canada ☺

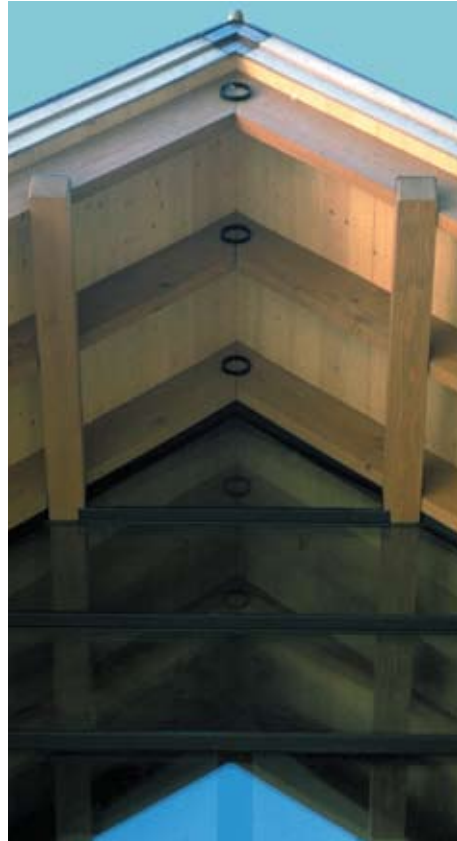




WHITEFISH LODGE

Whitefish, MT

A residential business retreat for an American entrepreneur in Whitefish, Montana. The concept of land preservation and minimal environmental impact guided the program for this project. 60% of the required square footage is completely subterranean. This approach maximizes the available land use. Winter snow conditions provide two meters of insulation to the shallow pitched roofs. These carefully calculated roof slopes, combined with highly reflective metal roofing, reduce summer heat gain through reflectivity. Native plant materials require little or no supplemental irrigation once established.



Samoset at Winnepesaukee
📍 Gilford, New Hampshire



North Shore Music Theatre
Beverly, MA 📍

“Bob is visionary. He met our goal to integrate design, function, and the environment . . . even when the budget was slashed in half.”
– Jon Kimball. North Shore Music Theatre, Beverly, MA





O F F I C E

Buildings and landscapes are enduring commitments, not stylistic whims. Timeless architecture exists in harmony with its environmental and cultural landscape. It is evolutionary, and combines collective knowledge with contemporary technology to create new yet classic forms.

Gallup Medical Center
 ☉ Gallup, NM



Cambridge Systematics
 ☉ Cambridge, MA



GENERAL INVESTMENT AND DEVELOPMENT CO.

Boston, Massachusetts

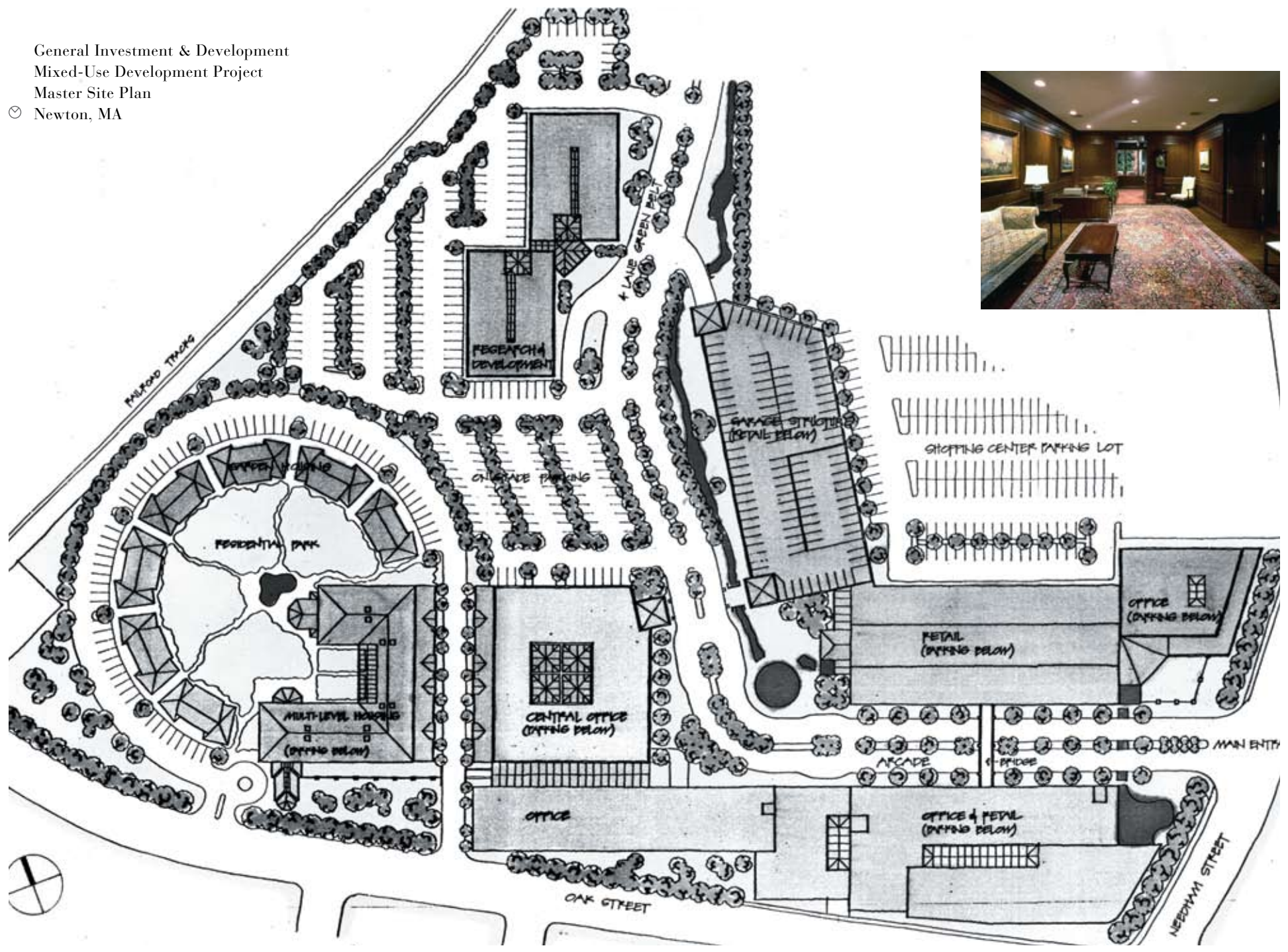
Planning and architecture for prestigious corporate offices in Boston's Federal Reserve Building. Located on the 20th and 21st floors of the Federal Reserve Building, the innovative design of this corporate headquarters provides an elegant and efficient office environment overlooking Boston and its harbor.

The strong geometric pattern in the space uses the existing building systems as its base. Executive offices in a traditional character wrap the perimeter. Interior glass allows daylight to pass through the perimeter, enlivening the more contemporary interior and allowing natural light in to every workspace.

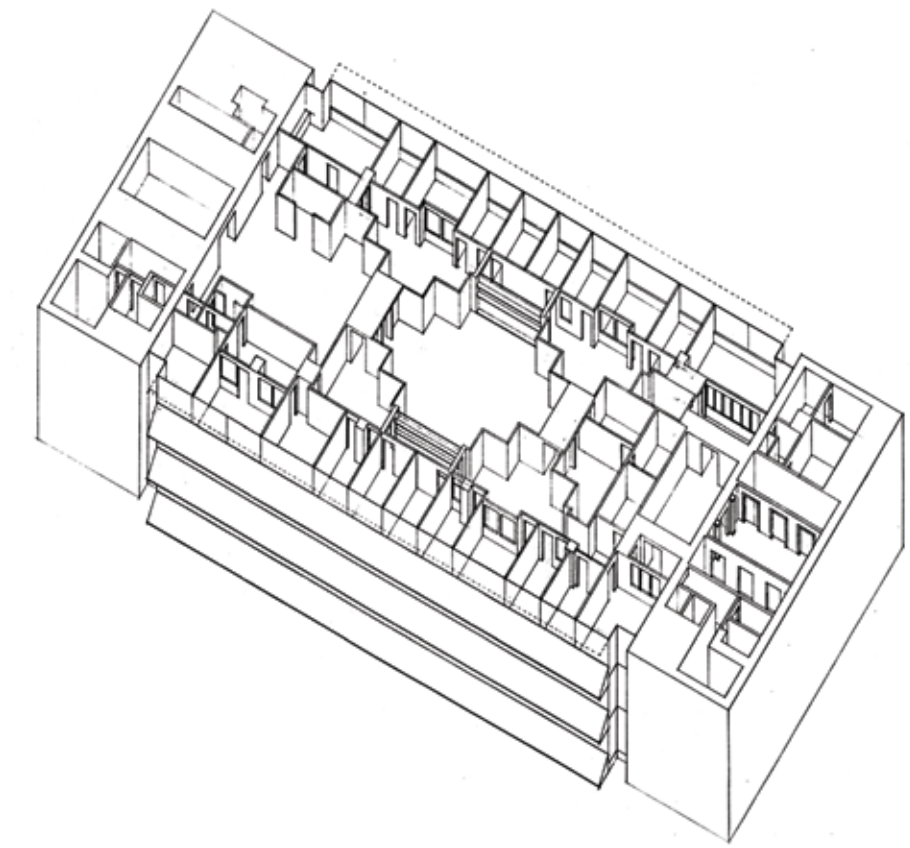
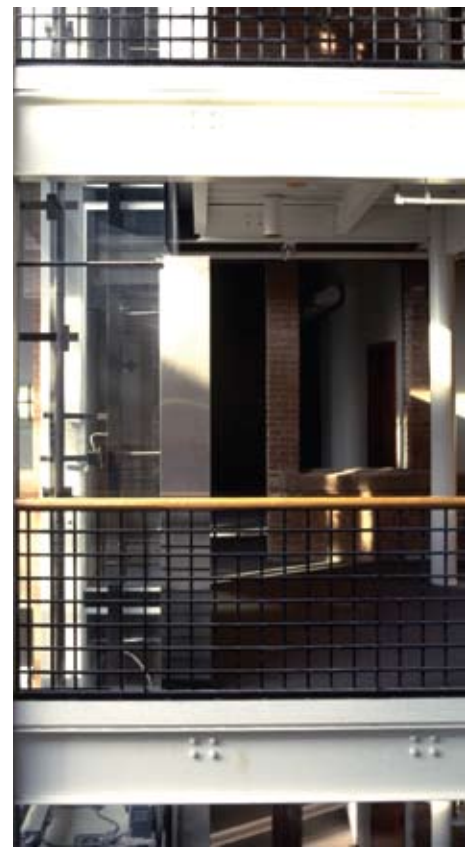
The geometric pattern creates a series of rooms in the interior core. Circulation, flowing between the perimeter offices and the interior, opens up at points to provide secretarial areas and gathering places. (Winner- Best Office Interior, New England Real Estate Directory, Fall 1984.)



General Investment & Development
 Mixed-Use Development Project
 Master Site Plan
 ☺ Newton, MA



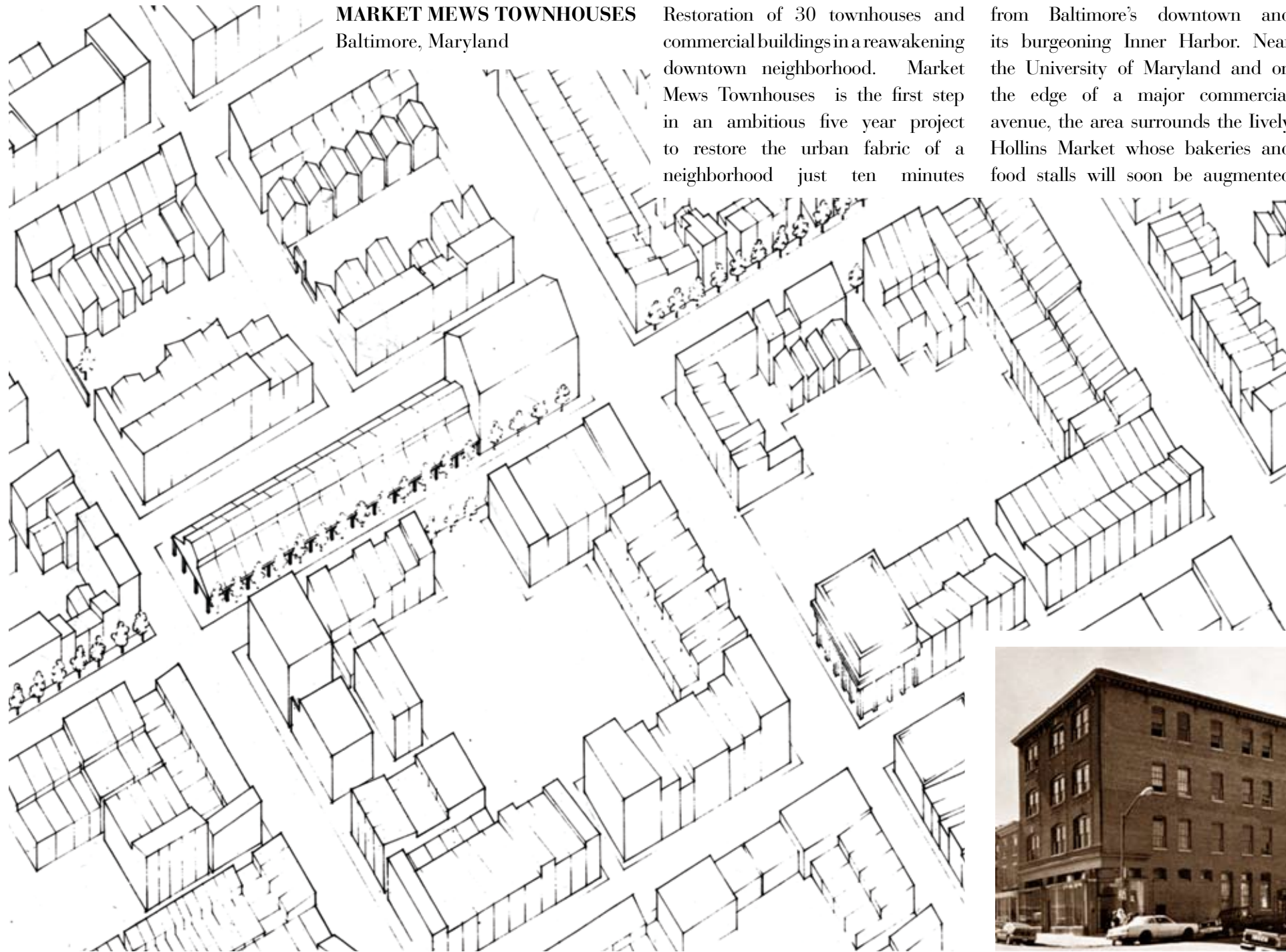
Riverbend Office Park ☺
 Watertown, MA ☺



MARKET MEWS TOWNHOUSES
Baltimore, Maryland

Restoration of 30 townhouses and commercial buildings in a reawakening downtown neighborhood. Market Mews Townhouses is the first step in an ambitious five year project to restore the urban fabric of a neighborhood just ten minutes

from Baltimore's downtown and its burgeoning Inner Harbor. Near the University of Maryland and on the edge of a major commercial avenue, the area surrounds the lively Hollins Market whose bakeries and food stalls will soon be augmented



by a performing arts center on the upper story. Regeneration of the neighborhood's life requires creativity in dealing with the range of work from architectural detail to urban design of the ten-block area. The 150 year-old buildings are retrofitted to provide 52

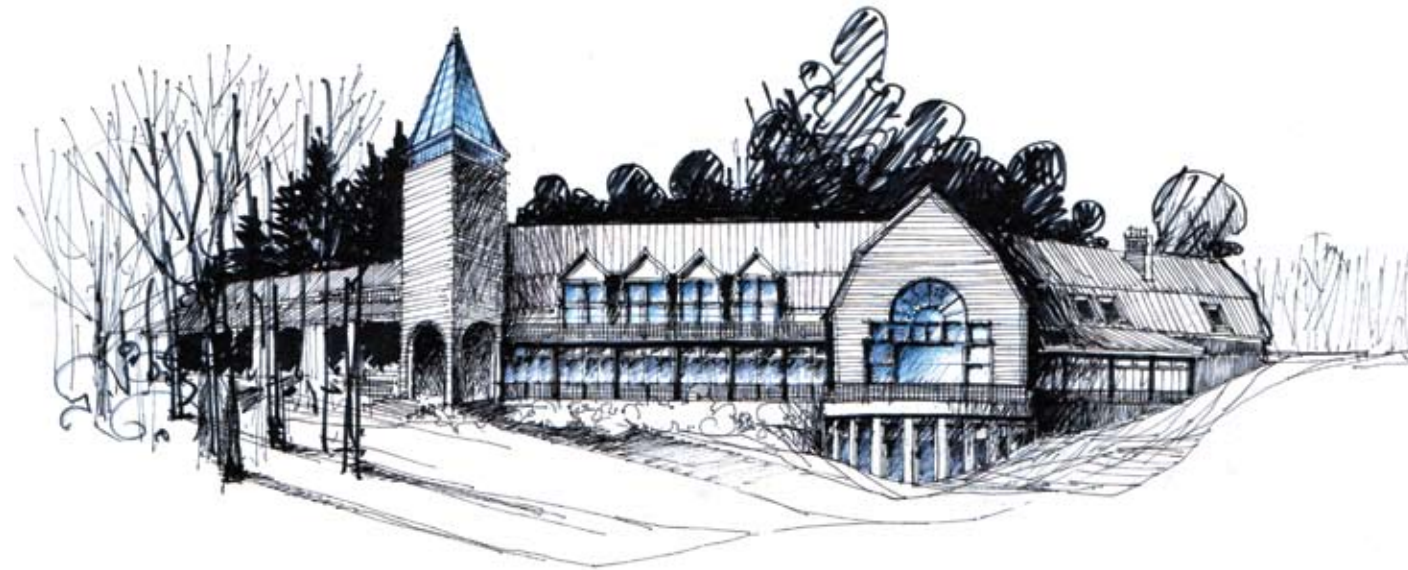
residential units, as well as penthouse offices and storefront commercial space. Contemporary concepts of light and space are used to transform the buildings into distinctive, delightful dwellings, while maintaining their unusual detailing and strong historic

character. Innovative integration of new architectural form with the existing structure has given each unit unique spatial characteristics. Careful balancing of the developers' budget limitations and the concerns of local preservation agencies has

provided urban redevelopment which is economic and sensitive, enhancing the attraction of the neighborhood.



EDUCATION



**FRANKLIN PIERCE COLLEGE
CAMPUS CENTER**

Rindge, New Hampshire

The Campus Center is intended to provide a distinct and memorable image for the College, while serving as a center for dining and general campus activities, and as a facility for summer conferences. Situated

on a south-facing slope overlooking beautiful Pearly Lake, the building follows the form of the land and recalls traditional shingle-style buildings in the region through materials and forms. Careful



integration of the building with the landform allows at grade access to all three levels, eliminating the need for expensive elevators and fire stairs. Construction systems are kept simple for local builders. The

building is organized around an interior "street." Like a small town Main Street, it links spaces and concentrates activity. Connecting the east and west ends of the building, and of the campus itself,



the street also connects the Great Hall, metaphorically, the town plaza, a grand interior space for a multitude of functions. The tower, marking the main entry for visitors, is an important new visual symbol

for the College. The Center will provide the College community with a needed focal point, an identity and a dynamic center of activity.

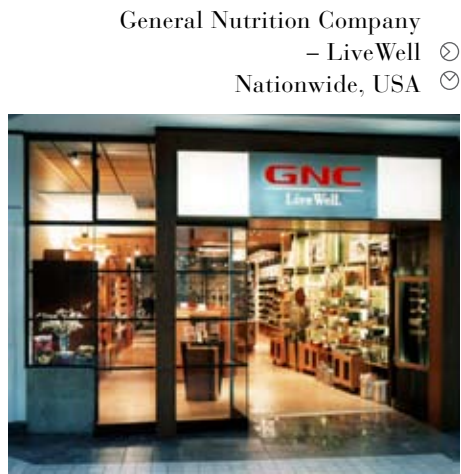
⊙ North Shore Music Theatre
⊙ Beverly, MA





R E T A I L

- ⊗ Nature's Northwest
- ⊗ Lake Oswego - Portland, OR



General Nutrition Company
 - LiveWell ⊗
 Nationwide, USA ⊗



⊗ The Amphora Company
 ⊗ West Coast Malls, USA

HOSPITALITY

HYANNIS HARBOR VIEW

Hyannis, Massachusetts

Located across from Hyannis Harbor on Cape Cod, MA. This new hotel represents the successful revitalization of a 1950's resort. The new design allows for more efficient use of space and maximizes income potential for the owners. Two glass-enclosed stair towers overlook the harbor and allow year-round use of the hotel. Old elevated walkways have been transformed into a grand deck wrapping the hotel. The deck's shingled walls are punctuated by open balconies with views to the courtyard and Hyannis Harbor.

The building's powerful form is articulated in curved balconies at each end of the courtyard, in a sweeping pipe rail stair, and in a curved wall of weathered shingles at the entrance. Form and materials work with the original building to create an architecture that is familiar to Cape Cod.

The U-shaped building has been transformed to a vibrant courtyard. A free form pool is surrounded by a series of terraced decks and a busy cafe. Trellises covered with flowering vines enclose the pool and decks, providing both required security for the pool and privacy and elegance for the cafe. Carefully landscaped gardens create quiet places for hotel guests.





GEDNEY FARM, OLD INN ON THE GREEN & GEDNEY SPA

New Marlborough, MA

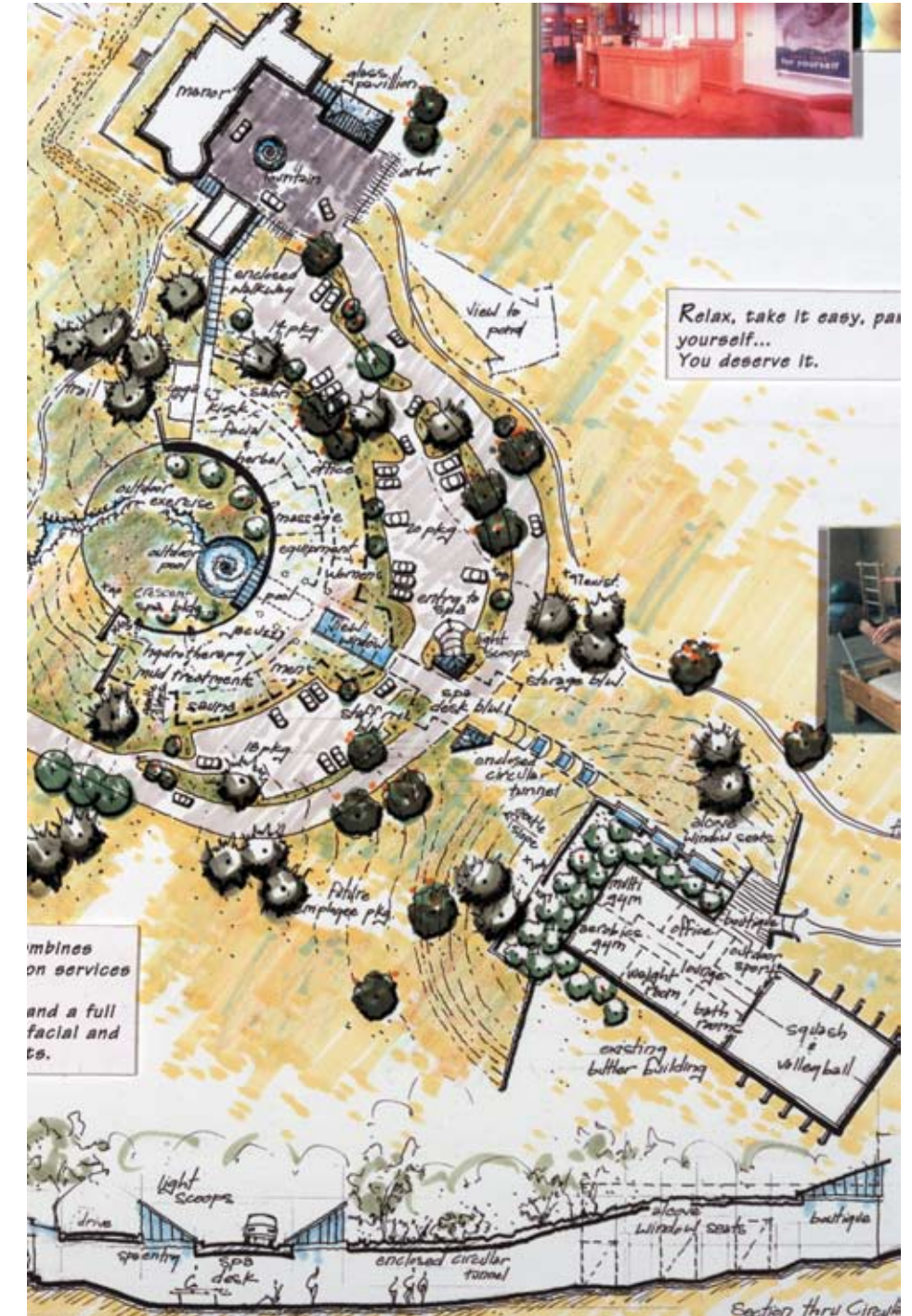
The Old Inn On The Green and Gedney Farm are surrounded by rolling fields and meadows. The Old Inn, once a stagecoach relay, offers authentically restored guest rooms, fine dining in intimate candle lit dining rooms and seasonal al fresco dining on the canopied garden terrace off the taproom. A few hundred yards away, Gedney Farm consists of two beautifully restored Normandy-style barns housing handsomely appointed guest rooms and suites and uncommon meeting rooms.



Today Gedney Farm has been boldly transformed into a unique lodging facility, featuring elegantly appointed guest rooms and suites in the former cattle barn, many with granite fireplaces, some with large tiled whirlpool tubs. Located across a courtyard is the former horse barn, now used as an exceptional space for weddings, special events and executive retreats.

In the renovation of Gedney Farm, the architect [Robert Edson Swain, Inc.] aspired to integrate the most distinctive stylistic elements and architectural features of two different eras. As a result, the original architectural features of the barn are strikingly preserved within a contemporary and adventuresome interior space.

- excerpt from www.gedneyfarm.com



H O U S I N G

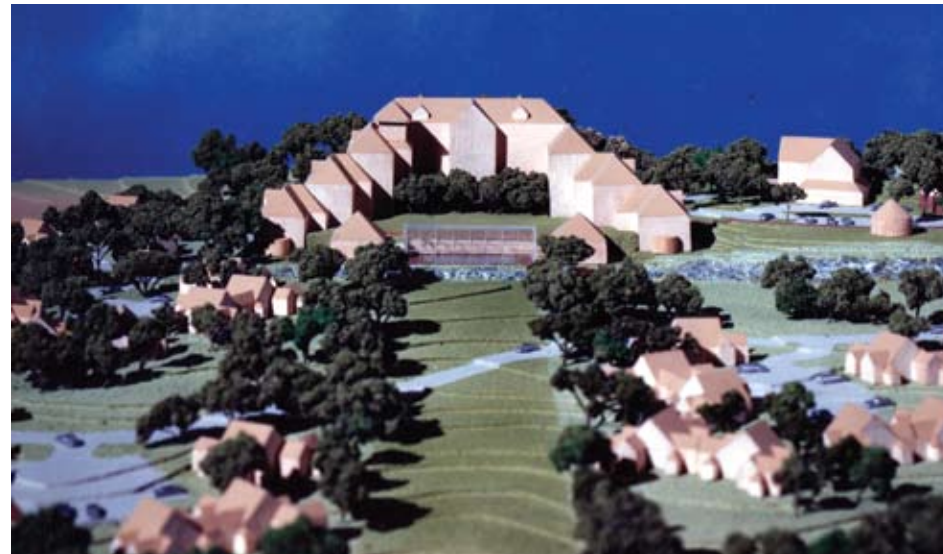


The Hall Estate
📍 Hull, MA

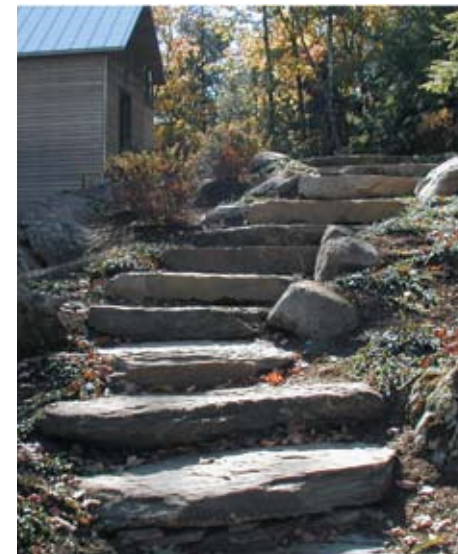
THE HALL ESTATE

Hull, Massachusetts

Integrity in housing means truthful expression through an honest use of structure and materials. Its inspiration is a forthright and practical expression. It is timeless yet modern, has a historical understanding of architecture, and combines collective knowledge with contemporary technology. It does not mean following the latest architectural fashion trends.

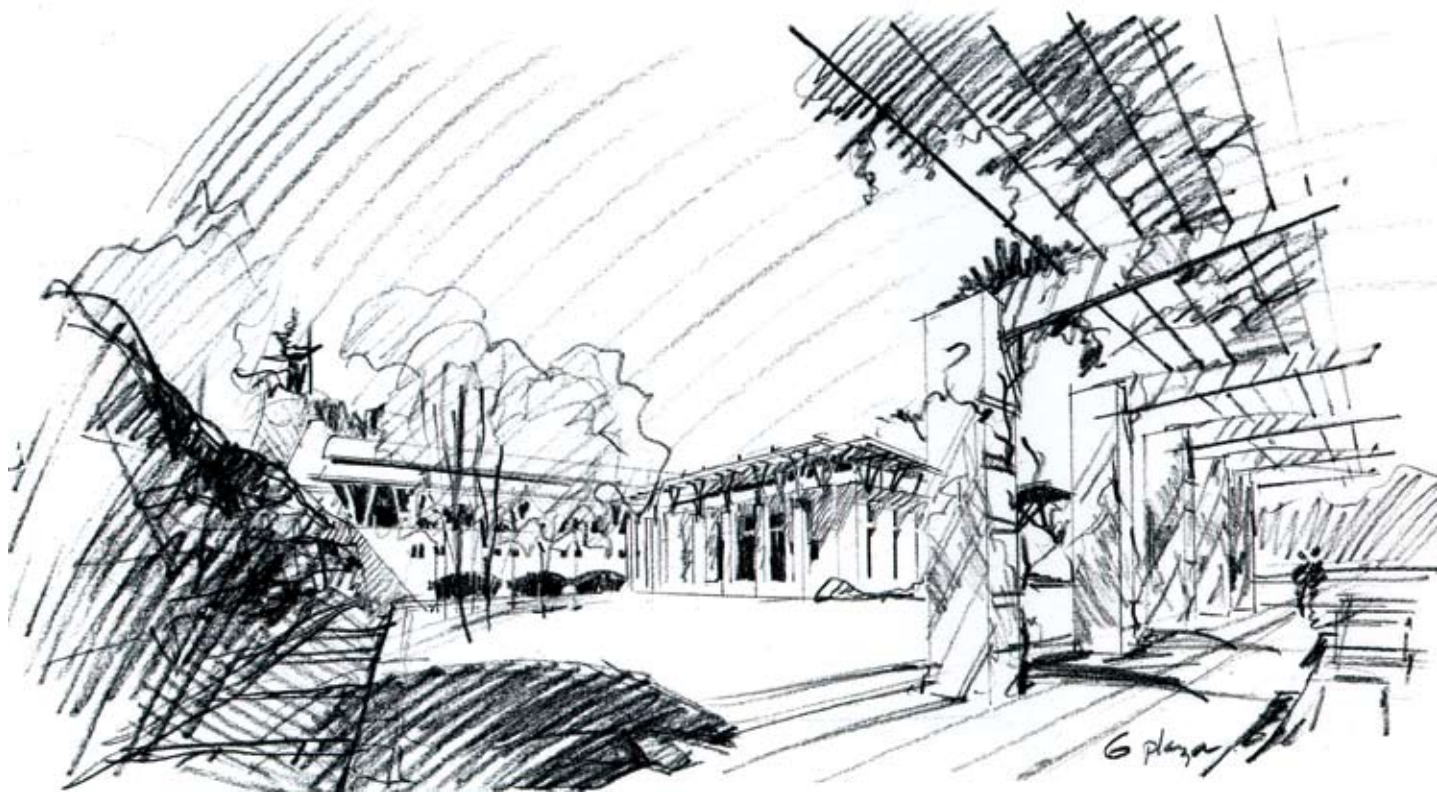


Jones Residence
📍 Seattle, WA



Condit Residence
Snoqualmie, WA 📍

Bouley Residence
South Kent, CT 📍



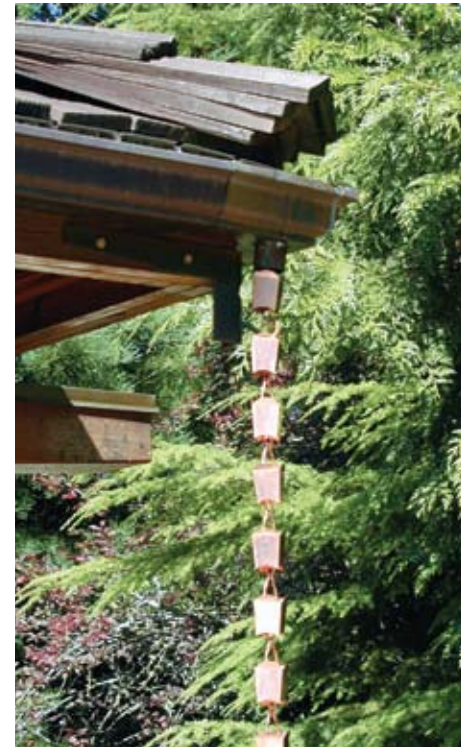
Phinney Ridge Project
☺ Seattle, WA



SAMOSET AT WINNIPESAUKEE

Gilford, New Hampshire

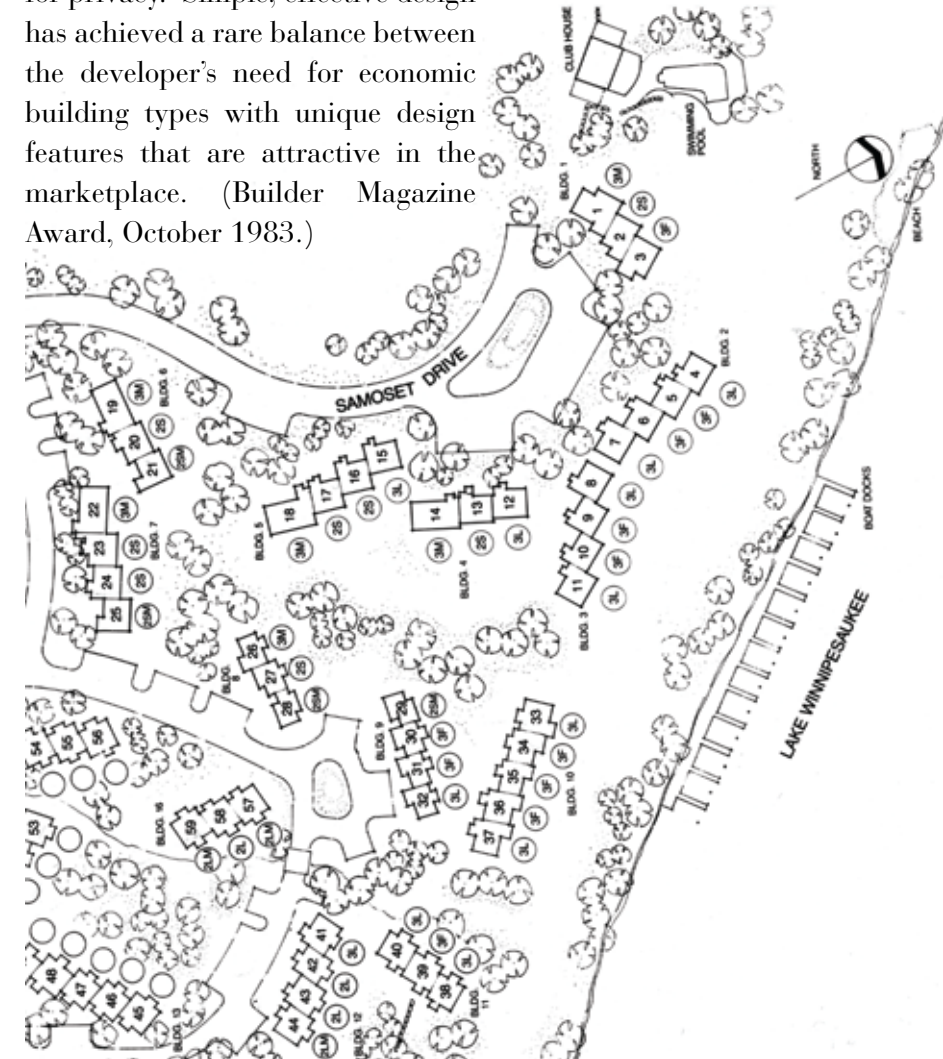
Morgan Residence
☺ Bainbridge Island, WA



Samoset successfully captures the magic of Lake Winnepesaukee, with lake front housing nestled at the forest edge. The design of Samoset clearly protects and responds to the quality of the natural environment. Units are clustered in groups of 3 to 5, relating to the rural setting and minimizing their impact on the land. The building clusters are carefully sited to take maximum advantage of the impressive view and to avoid unnecessary site work. Strategically located windows, screened porches

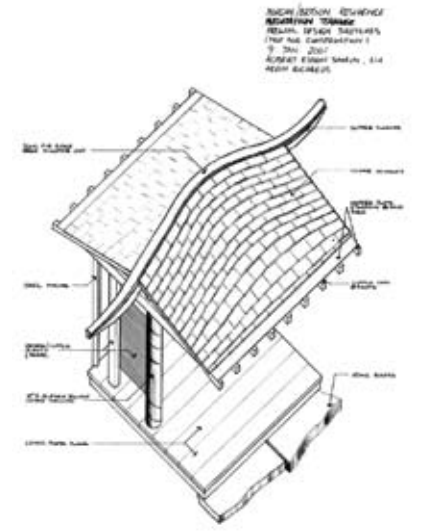


and decks open up the units to their lovely setting and create a light, spacious feeling. The openness of the units is carefully balanced with bedrooms and family rooms tucked away from the central activity core for privacy. Simple, effective design has achieved a rare balance between the developer's need for economic building types with unique design features that are attractive in the marketplace. (Builder Magazine Award, October 1983.)



MacIntosh Residence Fireplace
 Redmond, WA

Phinney Project
 Seattle, WA



BOB SWAIN | PROFESSIONAL | SEATTLE | WASHINGTON

swain's world

Bob Swain calls his garden a "personal sanctuary." We call it a seamless fusion of the soul, style and plants that make the Pacific Northwest such a hotbed of gardening

Left: Follow the walkway to the Buddha zone at the rear of the house. Right: Nearby is a quiet seating area that serves part of the house. The pavers are hand-carved green granite; the table is made from a Chinese mortar 'tai' bamboo; lends shelter and elegance.

BY BILL HARRIS
 PHOTOGRAPHY BY CLIVE NICHOLS





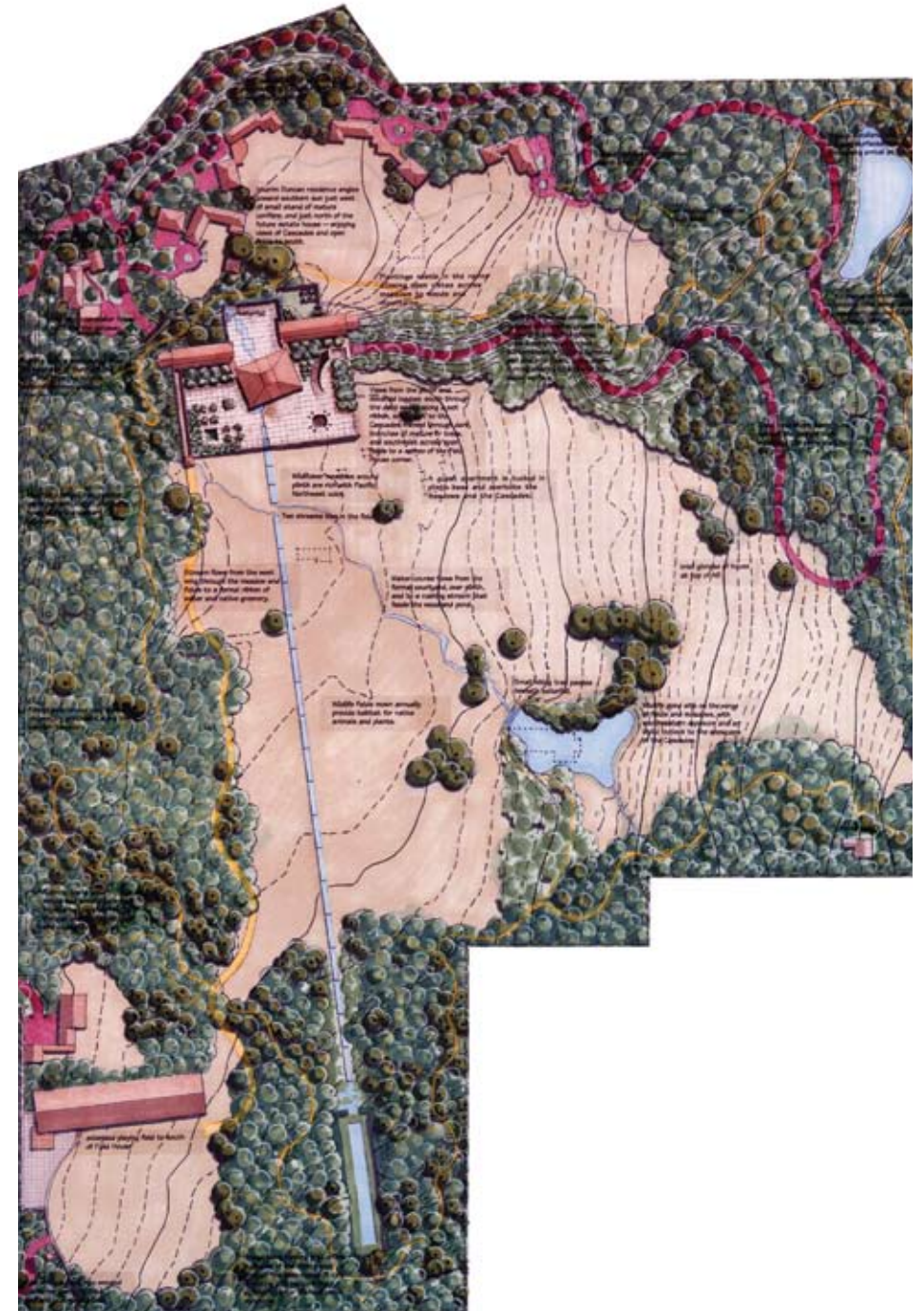
JAKUC RESIDENCE
Boston, Massachusetts

A contemporary luxury condominium in an historic South End rowhouse. The four-level Jakuc residence is one of three luxury condominiums within a Victorian-era, bow-front shell. It is organized around a meandering path, which connects a series of landings and levels, emerging finally at a roof deck overlooking the city. In keeping with the traditional rhythm of urban townhouses, major spaces are symmetrically organized on a formal axis generated by the bow in front, with parallel "service" spaces. The path traverses cross axially, celebrating movement with varying vistas and destinations. Multi-level spaces, windows and skylights help to create an elegant living environment with generous natural light, dynamic spaces and exciting forms.



Dayspring Farm ☺
Redmond, WA

Samoset at Winnepesaukee
Gilford, New Hampshire ☺



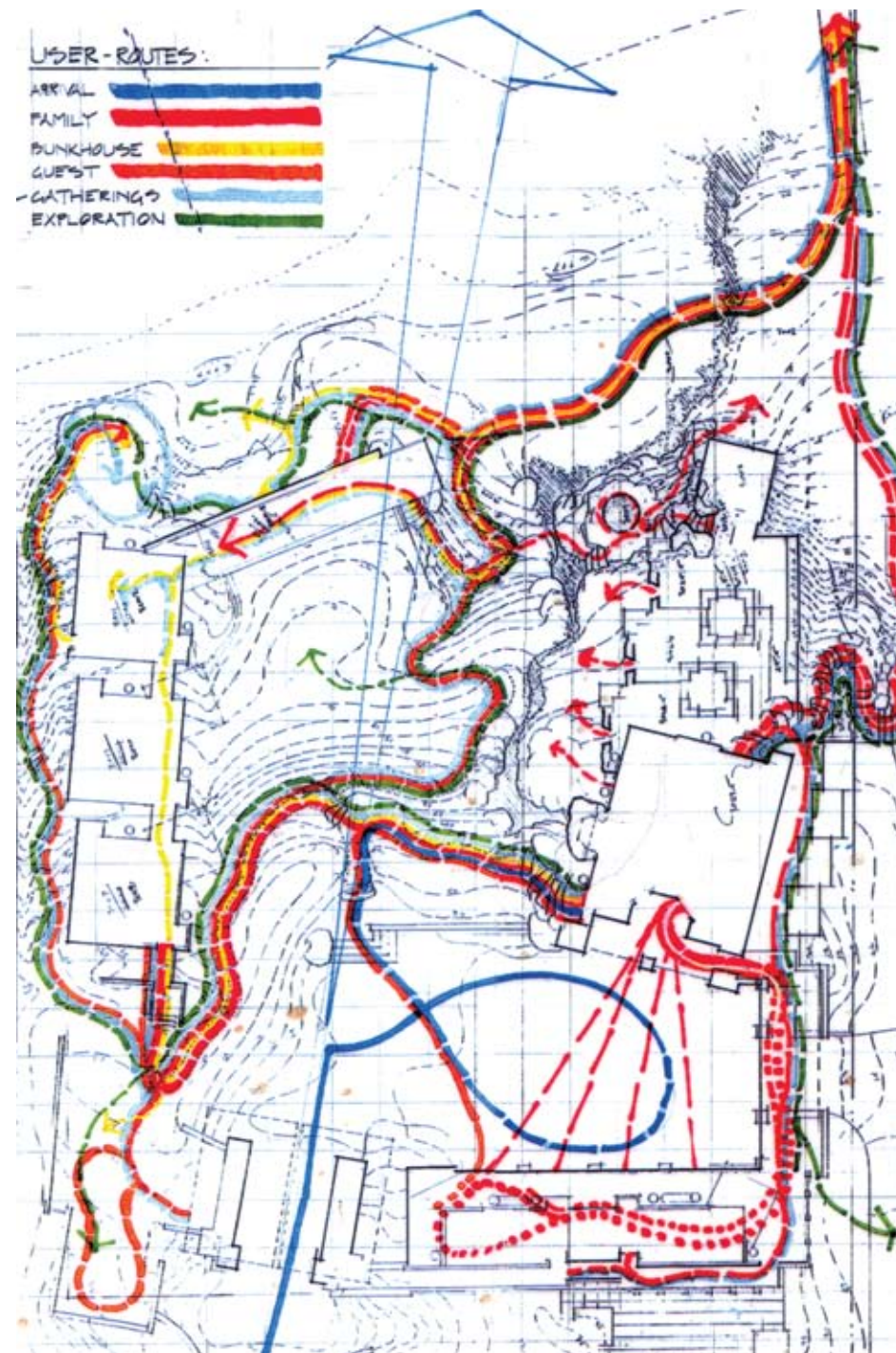


⊙ Condit Residence
Snoqualmie, WA

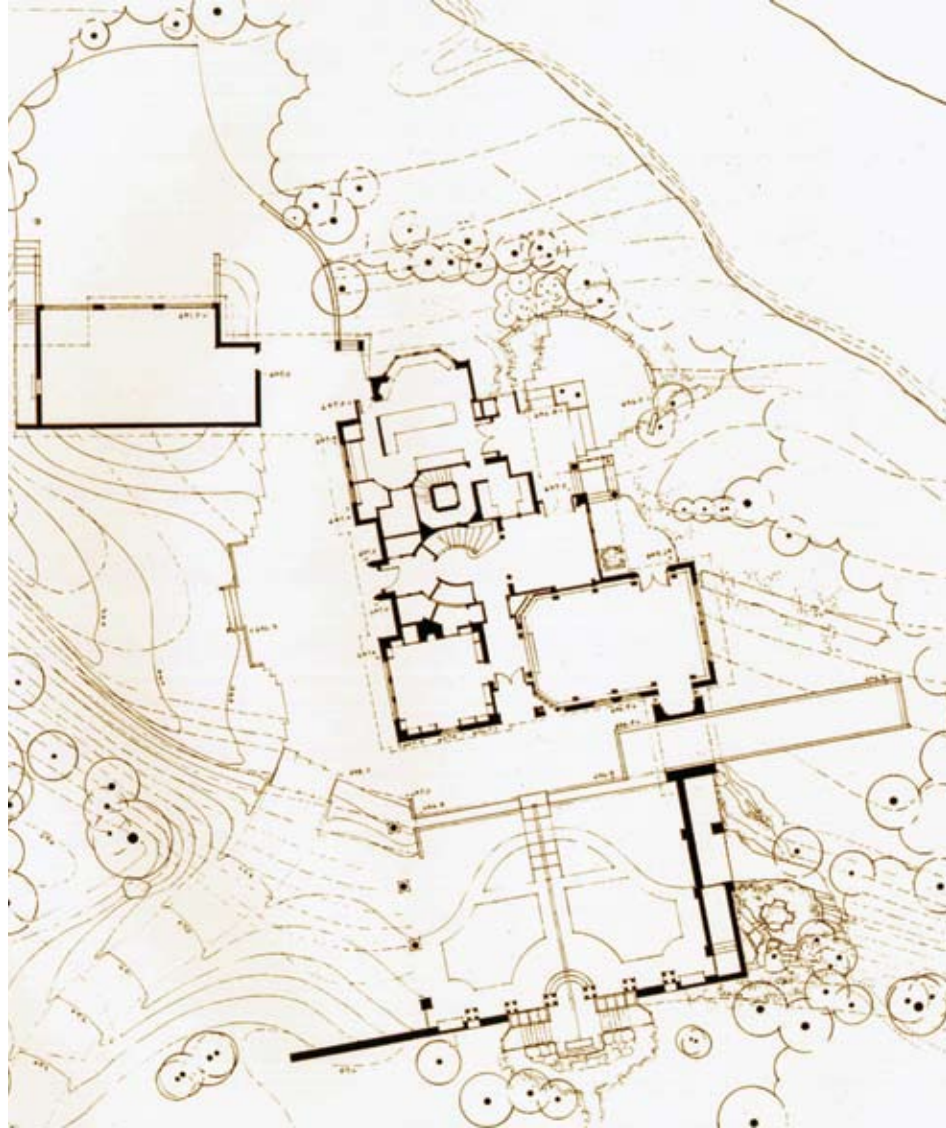


User Routes - Flow Analysis ⊙

Phinney Ridge Project ⊙
Seattle, WA

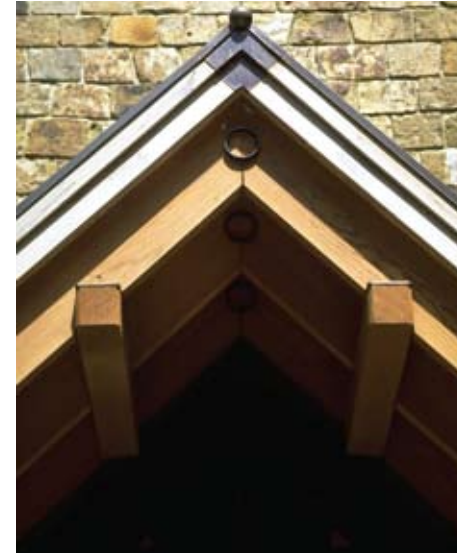


Condit Residence
Snoqualmie, WA



"We can't imagine an architect more skilled in all phases of design and construction, nor one who brings more joy to the process. Our recommendation of Bob Swain is absolute and unqualified. No one in the country could have done a better job."

– Phil Condit, CEO, the Boeing Company, Chicago, IL

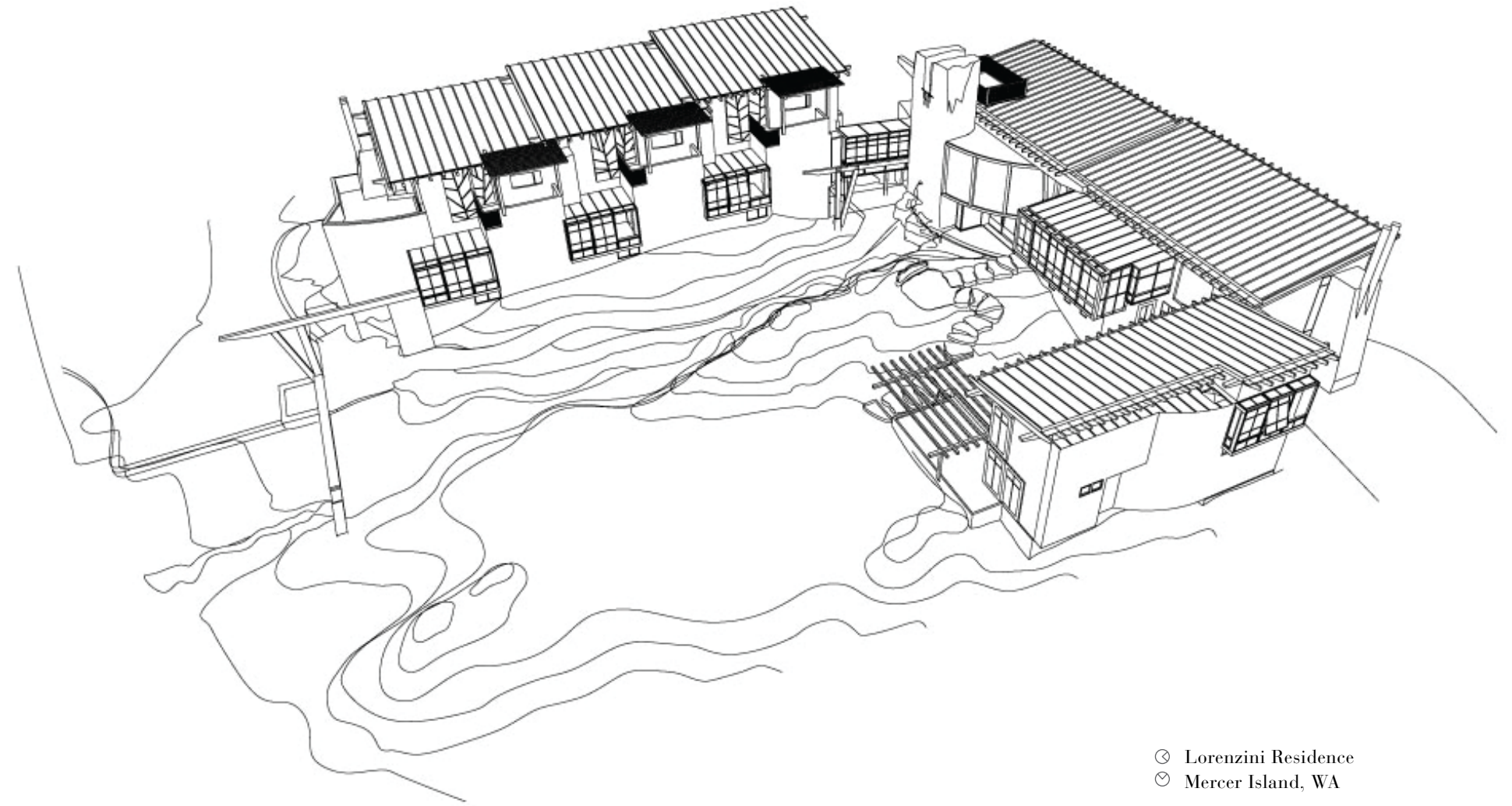




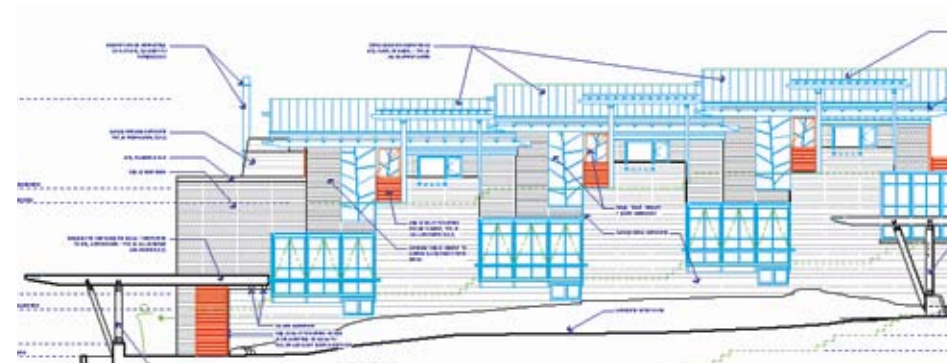
⊙ Kaiser Landscape
Bellingham, WA

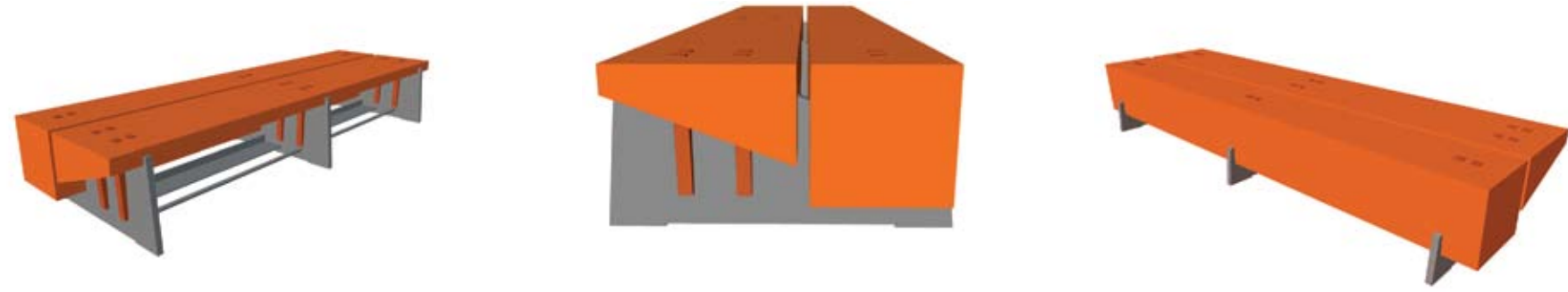
Receptivity

Clear communication is the basis of successful design. I have an exceptional ability to focus, to look and listen, and to absorb without preconception what a given setting and a particular client have to tell me. My natural energy brings joy to the process of design, engages the client in the excitement, inspires the design team, and sustains the positive experience to project completion.



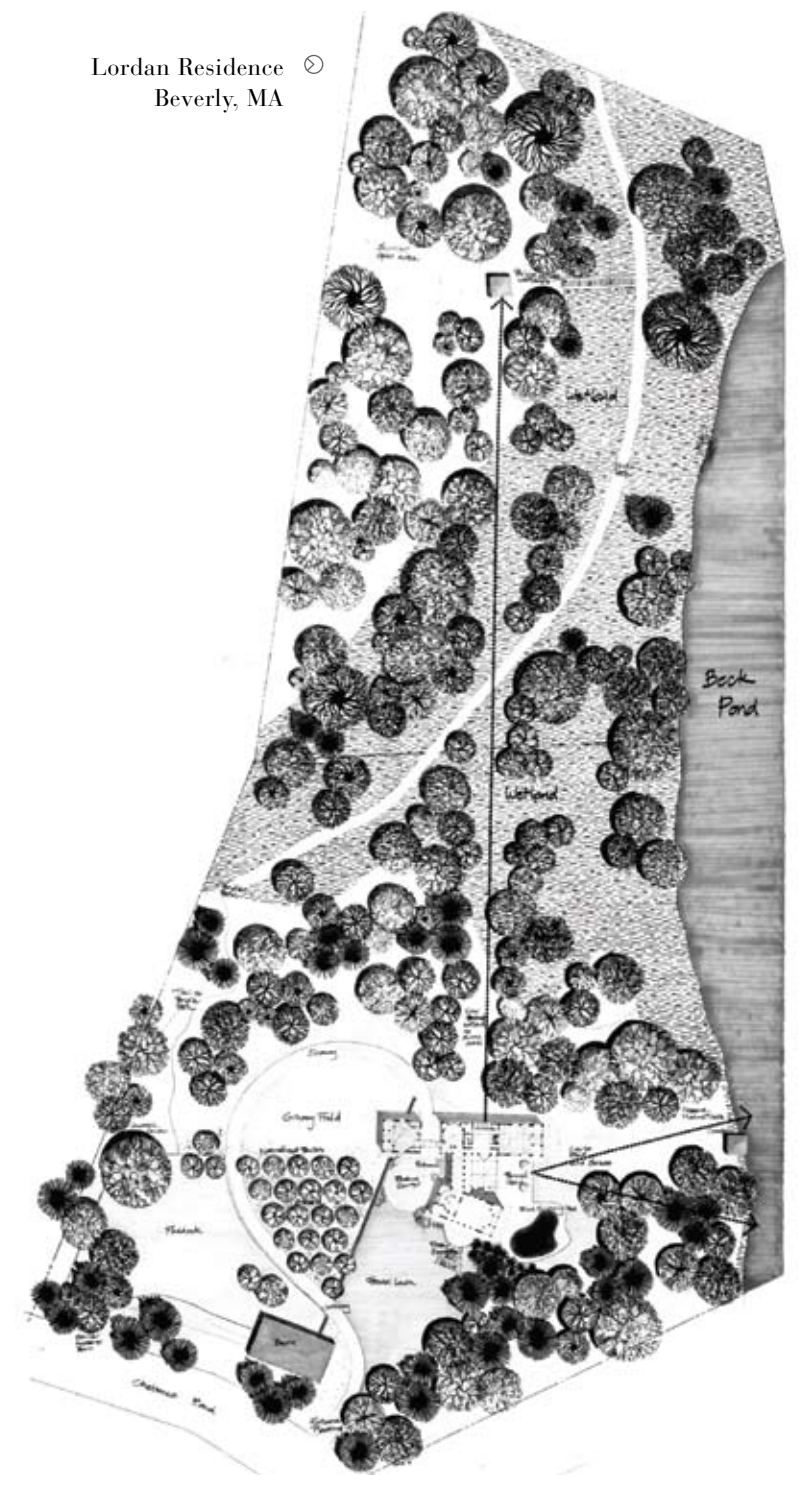
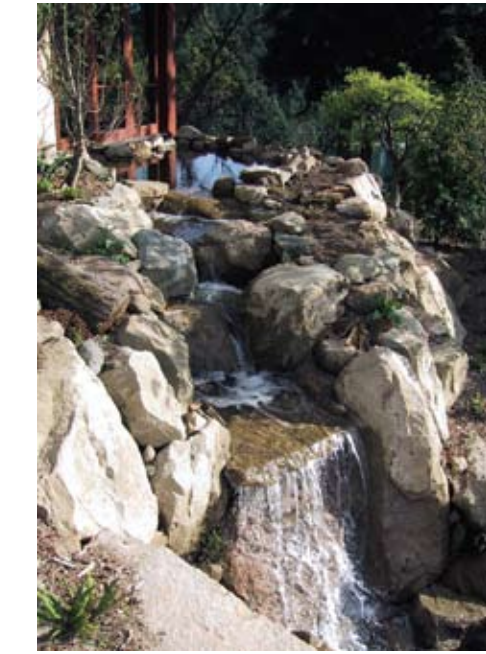
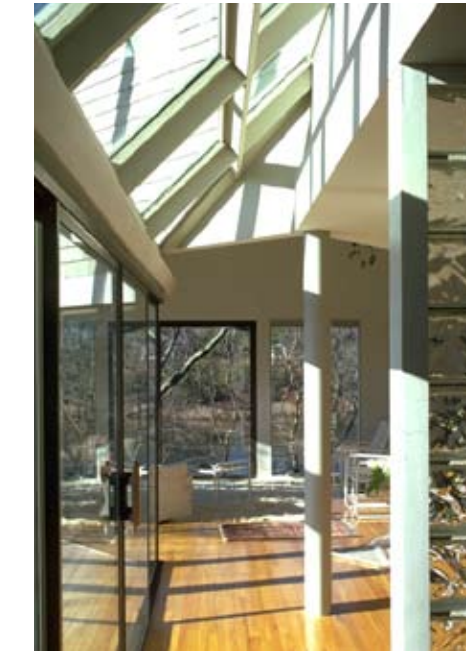
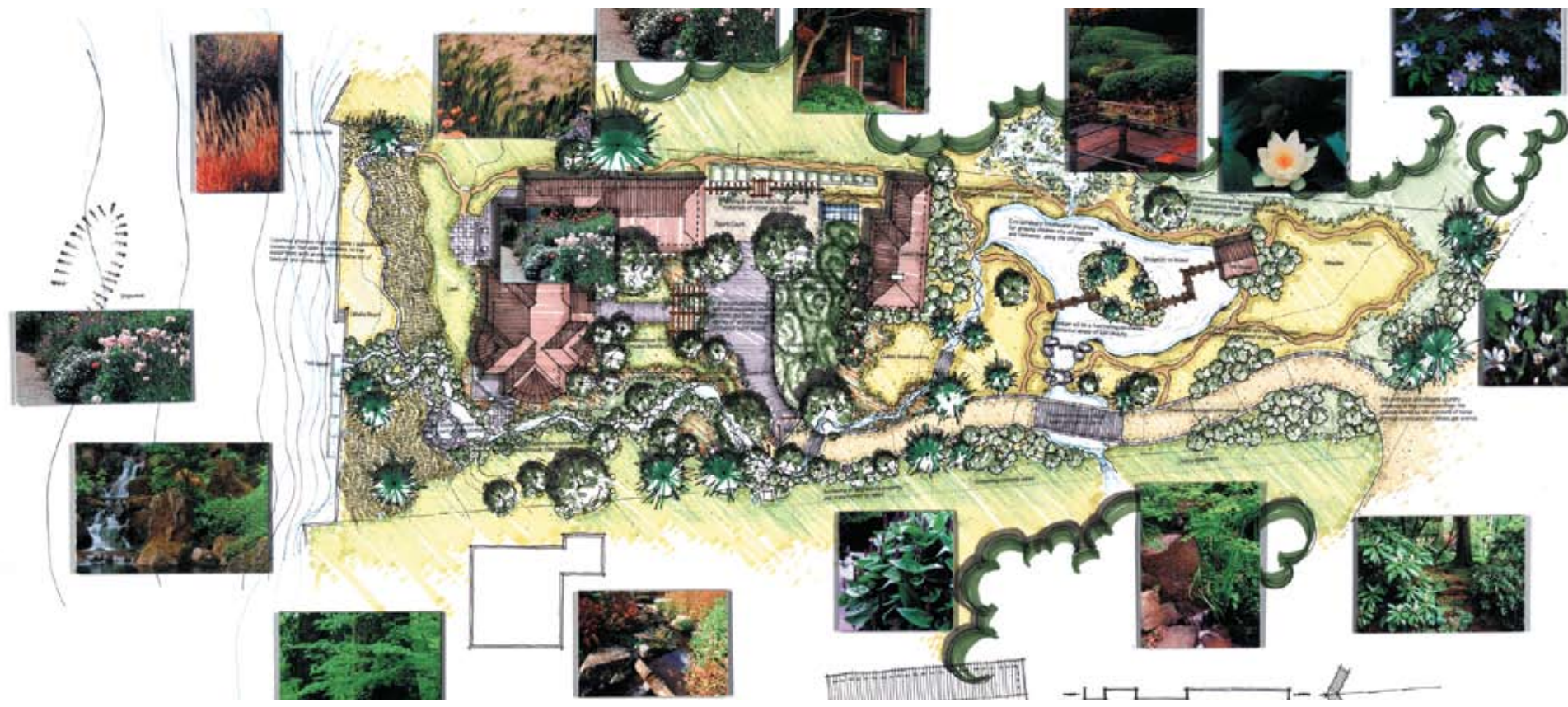
⊙ Lorenzini Residence
⊙ Mercer Island, WA



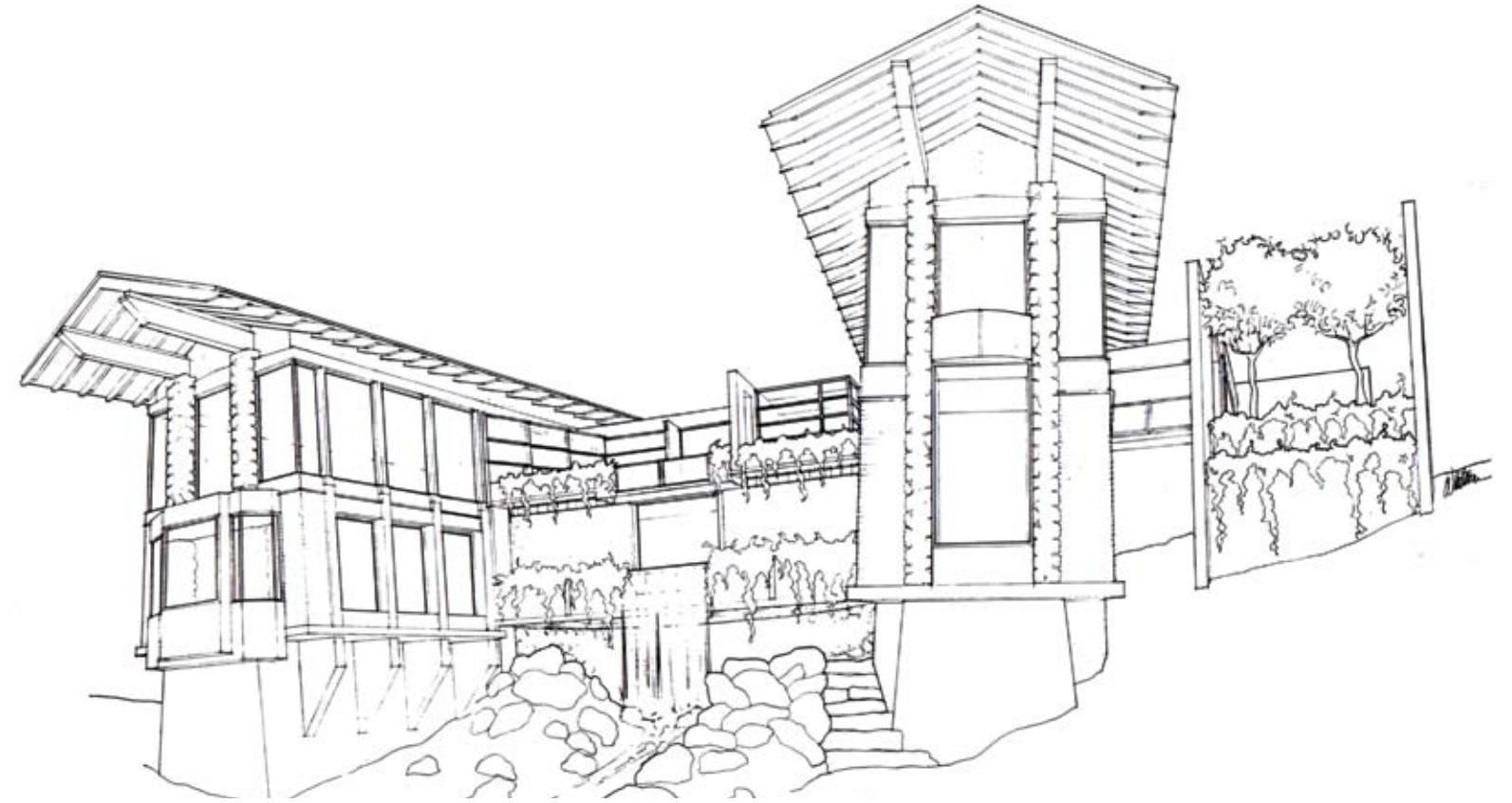
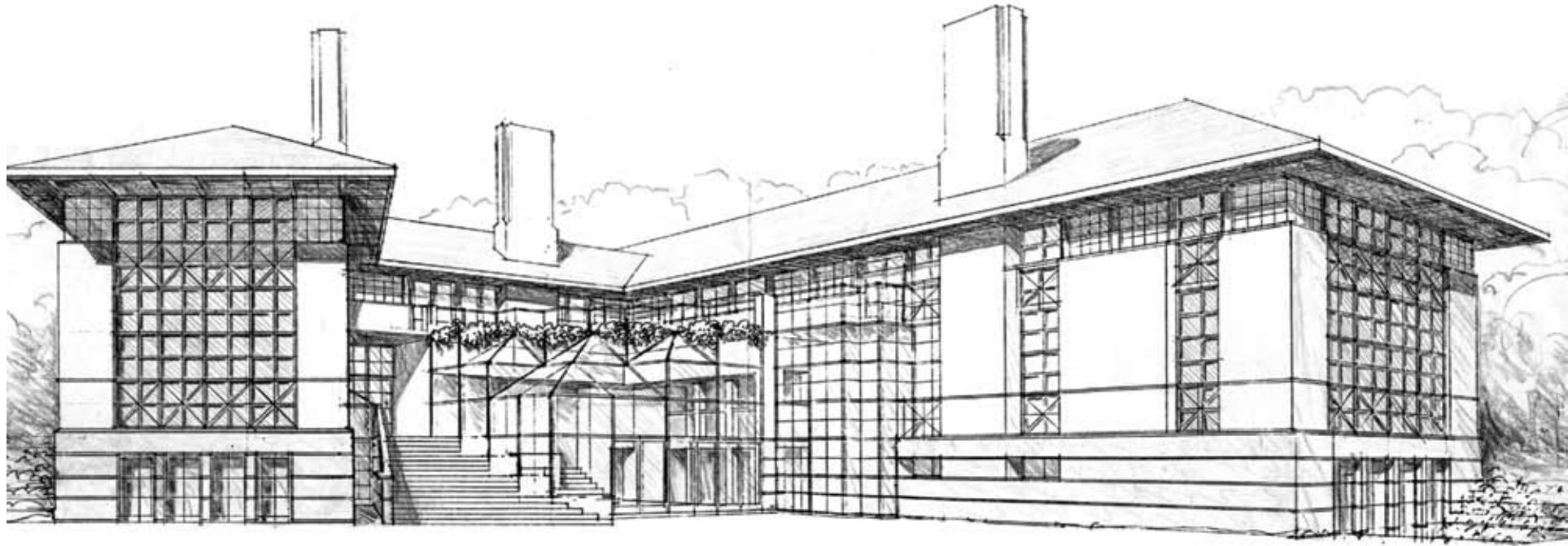


Morgan Bench Details
 Ⓧ Bainbridge Island, WA

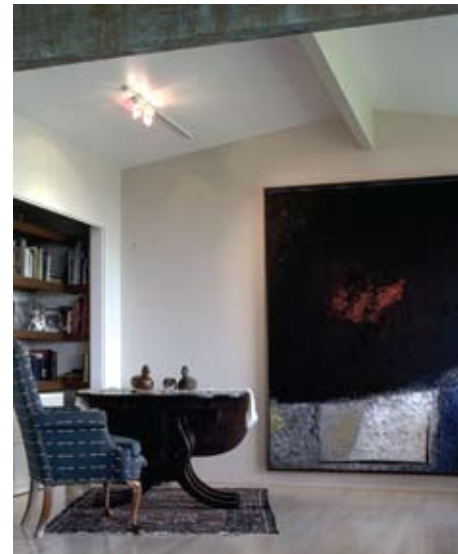
Morgan Landscape
 Ⓧ Bainbridge Island, WA



Lordan Residence
 Ⓧ Beverly, MA



- ⊙ Flores Residence
Bellevue, WA
- ⊙ Lordan Residence
Beverly, MA





HOBERT
EDSON
SWAIN

TAC

D *esign For Place*

in association with the Architects Collaborative - Cambridge, MA



**PROJECTS IN ASSOCIATION WITH
THE ARCHITECTS COLLABORATIVE (TAC)**

Shawmut National Bank ☉
40 Story Office Building
Boston , MA

Montego Bay Hospital
400 Bed Hospital,
☉ 1,200 Staff Housing Units
☉ Jaimaca, W.I.



Capitol Center
Downtown
Tallahassee, Florida ☉

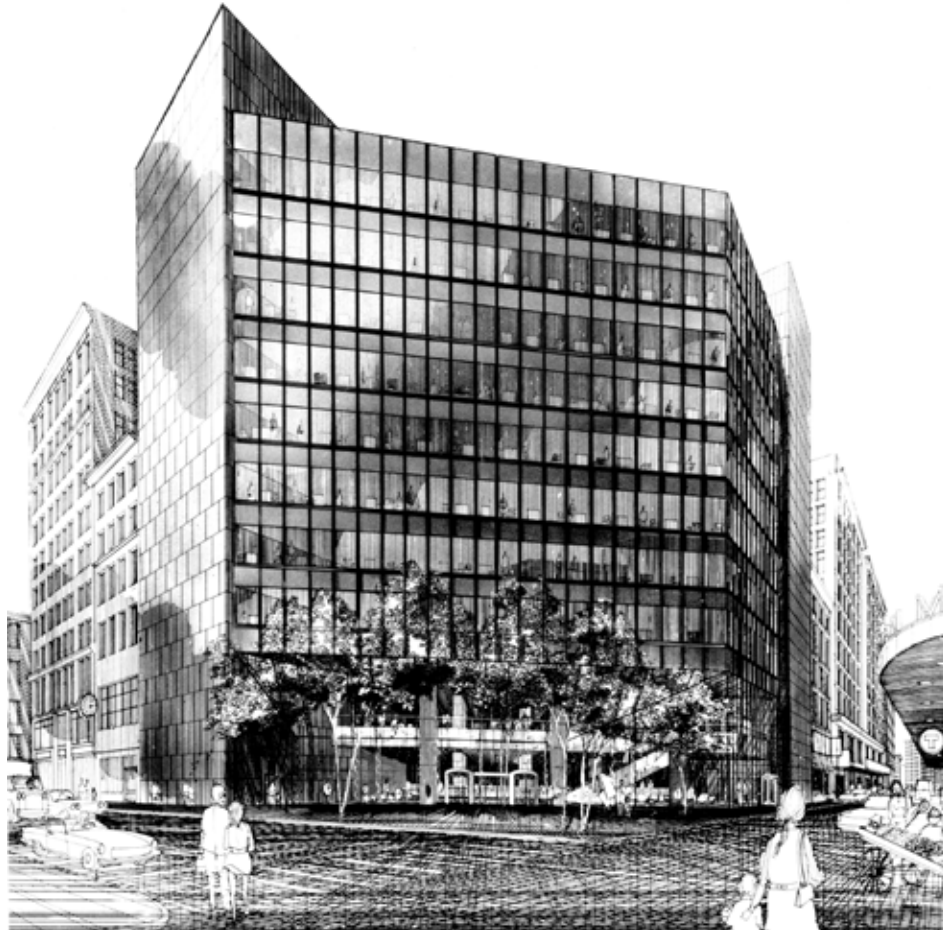




Quincy School ☉
Boston, MA



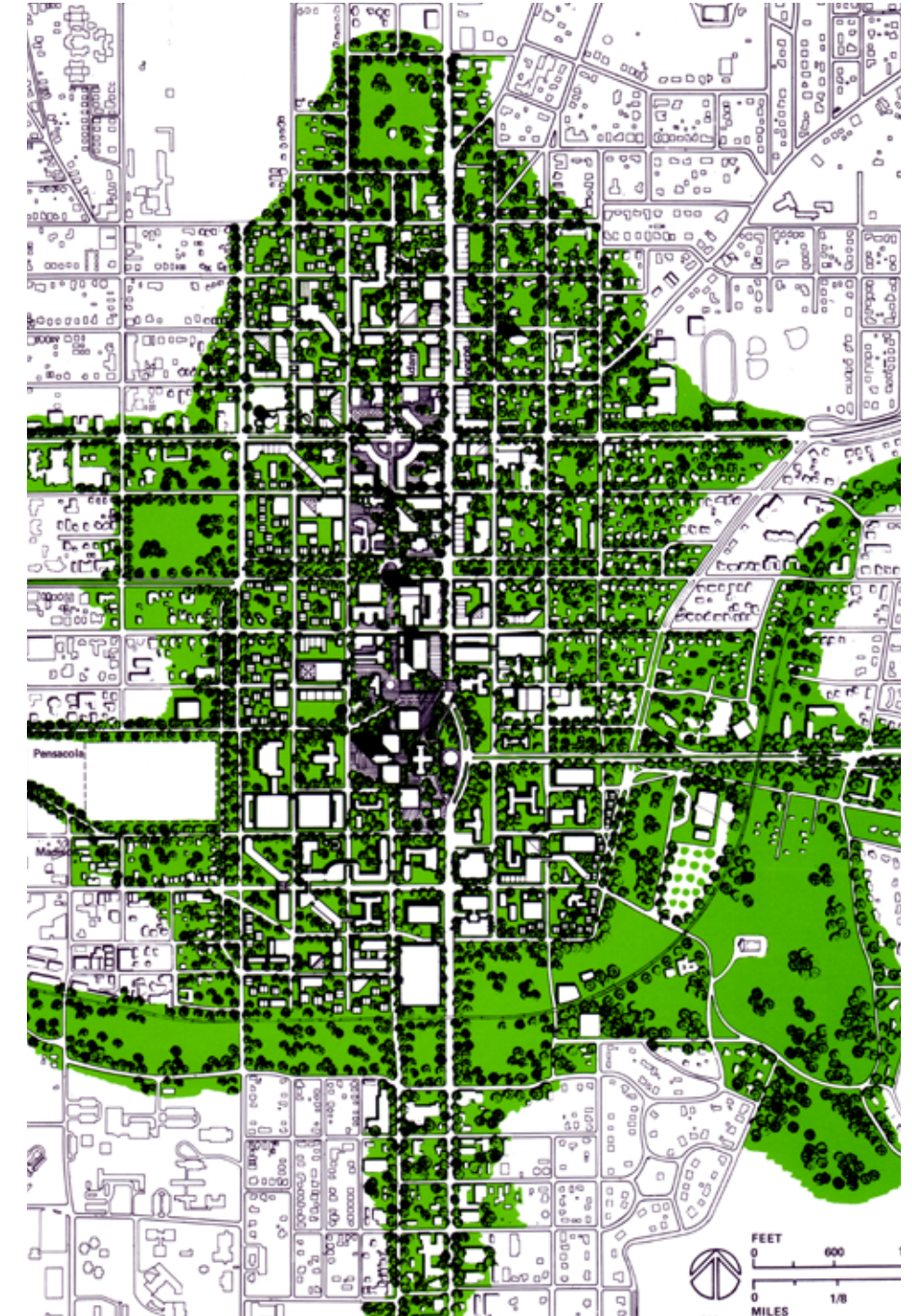
Charlestown Savings Bank
☉ 10 Story Office Building & Garden
☉ Boston, MA

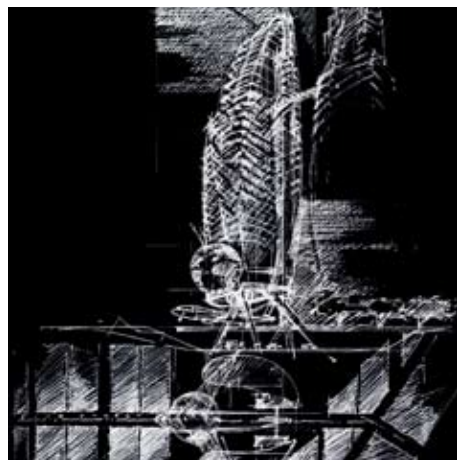
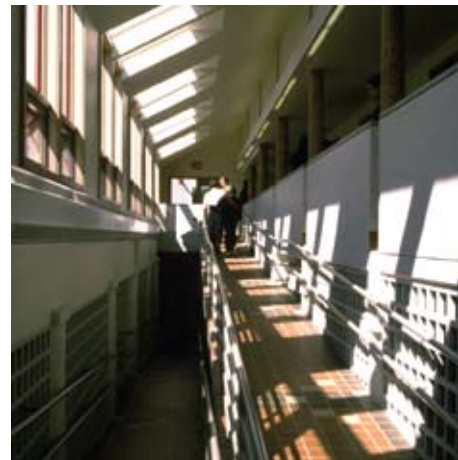
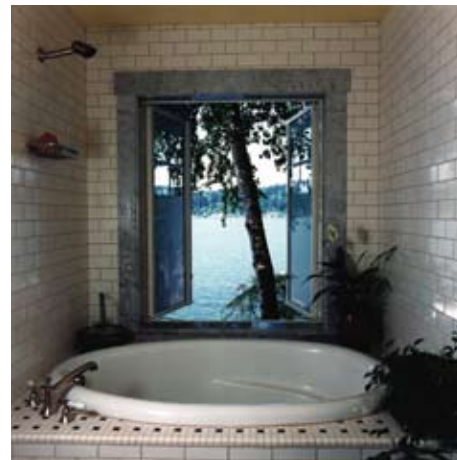


☉ Southeastern Illinois University
Edwardsville, IL

Quincy School
☉ Boston, MA

Capitol Center
Downtown
Tallahassee, Florida ☉





**Commercial:
Master/Site
Planning**

Nature's Northwest
Flagship Store
1998—Lake Oswego, OR

Nature's Northwest
Fremont Store
1999—Portland, OR

North Shore
Music Theatre
1989—Beverly, MA

Newton
Mixed-Use Project,
General Investment &
Development Co.
1989(D)—Newton, MA

Hall Estate,
Village Center
1989—Hull, MA

Emily Flint
Campus Center,
Franklin Pierce College
1988—Rindge, NH

Drislane Development
1988(D)—Lynn, MA

Hyannis
Harborview Hotel
1987—Hyannis, MA

NorthEastern
Mortgage Company,
Headquarters
1987—Cambridge, MA

Newburyport,
Waterfront Development
1986(D)—Newburyport, MA

Riverbend Office Park
1986—Watertown, MA

**Commercial:
Hotels/Inns/Resorts**

Athens Gateway Hotel
2007—Athens, Greece

Gedney Spa
2003—New Marlborough, MA

Old Inn on the Green
Thayer House
2000—New Marlborough, MA

Old Inn on the Green
Stebbins House
2000—New Marlborough, MA

Old Inn on the Green,
Kitchen/Room Improvements
2000—New Marlborough, MA

Old Inn on the Green,
Taylor Residence
1999—New Marlborough, MA

Old Inn on the Green,
Group Function Facilities
1993—New Marlborough, MA

YMCA Cambridge Hotel,
The Beacon Companies
1989(D)—Cambridge, MA

Gedney Farm,
Lodging Barn
1989—New Marlborough, MA

Holly Tree Hotel
1989—Hyannis, MA

Hyannis
Harborview Hotel
1987—Hyannis, MA

Willow Creek
1987(D)—New Marlborough, MA

Newburyport,
Waterfront Development
1986(D)—Newburyport, MA

Steele Hill West Resort
1983—Sanbornton, NH

**Commercial:
Retail**

Athens Gateway
Branch Bank
2007—Athens, Greece

David Bouley
Restaurant
2003—New York, NY

General Nutrition Co.
5800 Store Reset
2003—Pittsburgh, PA

General Nutrition Co.
Concept Development
2001—Pittsburgh, PA

Natures Northwest
Fremont Store
1999—Portland, OR

Natures Northwest
Gresham Store
1999(D)—Portland, OR

Natures Northwest
Concept Development
1998—Lake Oswego, OR

General Nutrition Co.
50 Store rollout
1998—Pittsburgh, PA

General Nutrition Co.
Live Well Concept
1997—Pittsburgh, PA

Amphora
10 Store rollout
1997—Seattle, WA

Amphora
1994—Seattle, WA

Frameworks
1990—Burlington, MA

Putnam Hall Shops
1990(D)—Orange, MA

London Harness
1989—Wellesley, MA

**Commercial:
Retail (continued)**

Harborview Restaurant
1987—Hyannis, MA

Kerdos Building
1987—Boston, MA

MIT
Microcomputer Center
1987—Cambridge, MA

NorthEastern
Mortgage Company,
Branch Office
1987—Boston, MA

1045 Hollins Street
1986—Baltimore, MD

1047 Hollins Street
1986—Baltimore, MD

Market Mews Townhouses
1100 Hollins Street
1986—Baltimore, MD

51 Arlington Street
1986—Baltimore, MD

Channing House,
Arlington Street Church
1986—Boston, MA

Classic Revivals
1985—Boston, MA

Cantin Abruzzi
1978—Newton Highlands, MA

Newton Highlands Center
1978(D)—Newton Highland, MA

(D) *Design services only
Project not built to date*

**Commercial:
Office**

North Shore
Arts Foundation
1989(D)—Beverly, MA

Riverbend Office Park,
Phase II
1989(D)—Watertown, MA

Schneider Associates
1989—Brookline, MA

Nizhoni Medical Center
1988—Callup, NM

NorthEastern Mortgage
Company,
Headquarters
1987—Cambridge, MA

Dwyer Square
1987—Cambridge, MA

Channing House,
Arlington Street Church
1986—Boston, MA

Market Mews Townhouses,
1100 Hollins Street
1986—Baltimore, MD

Riverbend Office Park
1986—Watertown, MA

Kerdos Building
1986—Boston, MA

MGM Building
1985(D)—Boston, MA

Harsch Realty
1983—Williamstown, MA

Village West
1983—Laconia, NH

Rogal Associates
1980—Newton, MA

Ellis and Andrews
Expansion
1979—Cambridge, MA

Newton Highlands Center
1978(D)—Newton Highland, MA

**Commercial:
Architectural
Interiors/Space
Planning**

Virtuoso International
2002—Seattle, WA

Boeing Business Jets
Aircraft Interiors
2000—Seattle, WA

Allied Percival
International
1999—Seattle, WA

Allied Percival
International
1994—Seattle, WA

Allied Percival
International
1993—Seattle, WA

Executive Jet Aviation
1990(D)—Islip, NY

Rainaldi Dental Office
1989—Callup, NM

Nizhoni Medical Tenants
1989—Callup, NM

MIT
Microcomputer Center
1989—Cambridge, MA

Shapira Real Estate
1988(D)—Boston, MA

Advan*Cer
1988—Watertown, MA

American Management
Millwork
1988—Watertown, MA

Autosplice, Inc.
1988—Cambridge, MA

Emily Flint
Campus Center,
Franklin Pierce College
1988—Rindge, NH

New England Research,
Expansion
1988—Watertown, MA

Stonehand, Inc.
1988—Cambridge, MA

**Commercial:
Architectural
Interiors/Space
Planning (continued)**

Business Research
Corporation Expansion
1987—Boston, MA

Carpenter Company
1987—Boston, MA

General Investment and
Development Company,
Headquarters Expansion
1987—Boston, MA

New England Research
1987—Watertown, MA

NorthEastern Mortgage
Company Offices
1987—Cambridge, MA

Pathfinder Fund
1987—Watertown, MA

Primericus
1987—Watertown, MA

Sterling Hager
1987—Cambridge, MA

Swain Associates, Inc.
1987—Cambridge, MA

The Lordan Companies
1987—Burlington, MA

Business Research Corp.
1986—Boston, MA

Riverbend Office Park
Atrium
1986—Watertown, MA

Technical Data Corporation
1986—Boston, MA

Windsor Management
1986—Marlborough, MA

Windsor Management
1986—Norwood, MA

Windsor Management
1986—Waltham, MA

Work-Family Directions
1986—Watertown, MA

**Commercial:
Architectural
Interiors/Space
Planning (continued)**

Boston Wharf Company
1985(D)—Boston, MA

Cambridge Systematics
1985—Cambridge, MA

Resource Management
1985(D)—Cambridge, MA

Rindge Hall,
Franklin Pierce College
1985(D)—Rindge, NH

Semper Enterprises
1985—Osterville, MA

SKOK Systems, Ltd.
1985—Cambridge, MA

SKOK Systems, Ltd.
1985—New York, NY

Watzman & Keyes
1985—Cambridge, MA

Bay Colony Properties
1984(D)—Boston, MA

General Investment and
Development Company,
Headquarters
1984—Boston, MA

Groff-Rosenweig
1984—Cambridge, MA

Marketplace Center
1984—Boston, MA

Muscular Therapy
1984—Cambridge, MA

Repligen
1984—Cambridge, MA

SKOK Systems, Ltd.,
Riverside Place
1984(D)—Cambridge, MA

Computer Consoles, Inc.
1983—Cambridge, MA

Rogal Associates
1980—Newton, MA

Eugene O'Neil Theater
Green Room & Ticket Ctr.
1975—Provincetown, MA

**Commercial:
Landscape Design**

Nature's Northwest
Flagship Store
1998—Lake Oswego, OR

Nature's Northwest
Freemont Store
1999—Portland, OR

Nature's Northwest
Gresham Store
1999(D)—Portland, OR

Riverbend Riverwalk
1992—Watertown, MA

Warwick City Park
1990—Warwick, RI

Hall Estate
Pool House Gardens
1989—Hull, MA

Windsor Gardens
1989—Waltham, MA

Windsor Gardens
1989—Norwood, MA

Windsor Gardens
1989—Marlborough, MA

Emerson Aviation
1989(D)—Laconia, NH

Emily Flint
Campus Center,
Franklin Pierce College
1988—Rindge, NH

Hyannis Harborview
1987—Hyannis, MA

(D) *Design services only
Project not built to date*

**Commercial:
Landscape Design (continued)**

NorthEastern Mortgage
Company Headquarters
1987—Cambridge, MA

New England Life
Parking Garage
1986(D)—Boston, MA

Riverbend Office Park
1986—Watertown, MA

West Tisbury Streetscape
1986(D)—Martha's Vineyard, MA

Cedardale Fitness Center
1985(D)—Haverhill, MA

Village Bank
1983—Gilford, NH

Village West
1983—Gilford, NH

Industrial

Aircraft Intelligence
Aircraft Interior Components
2002—Seattle, WA/Naples, Italy

Boeing Business Jets
Project SOPHIA
Aircraft Interior Innovations
2001—Seattle, WA/Naples, Italy

Boeing Business Jets
Custom Interior for 737-700
2001—Basil, Switzerland/Seattle, WA

Boeing Business Jets
Project Skyhome
2000(D)—Seattle, WA

Boeing Business Jets
BBJ2 First Class
2000(D)—Seattle, WA

The Boeing Company
Corporate Headquarters
1999—Seattle, WA

Butler Aviation,
Airport Service Center
1991—Boston, MA

Executive Jet Aviation,
Maintenance Facilities
1990—Westfield, MA

Emerson Aviation Hanger
1989—Laconia, NH

North Shore
Music Theatre,
Production Facility
1989—Beverly, MA

Emerson Aviation,
Airport Service Center
1988(D)—Laconia, NH

Jet Aviation USA,
Airport Service Center
1988—Bedford, MA

Edwards Boat Yard
1981—Falmouth, MA

Institutional

Athens Gateway
University of Athens
Entrepreneur Center
2007—Athens, Greece

United Methodist Church
1990—Barrington, RI

YMCA Cambridge,
The Beacon Companies
1989(D)—Cambridge, MA

Hospice on Mission Hill
1989—Boston, MA

North Shore Music Theatre
1989—Beverly, MA

Massachusetts
Correctional Facilities,
Morse Diesel, Inc.
1989(D)—Boston, MA

Montserrat College of Art
1989(D)—Beverly, MA

Nizhoni Medical Center
1988—Callup, NM

Emily Flint
Campus Center,
Franklin Pierce College
1988—Rindge, NH

Channing House,
Arlington Street Church
1986—Boston, MA

Greenwood School
1986—Putney, VT

Conway School of
Landscape Design
1985—Conway, MA

Rindge Hall,
Franklin Pierce College
1985—Rindge, NH

Hathaway Medical Office
1985(D)—New Bedford, MA

Institutional (continued)

Rowe Camp and Conference Center
1982—Rowe, MA

Academia Language School
1979—Cambridge, MA

Eugene O'Neil Theater Green Room & Ticket Ctr.
1975—Provincetown, MA

Feasibility Studies

Quechee Inn
2003—Quechee, VT

Rhodes Architectural Stone Project Development/Feasibility
2002—Seattle, WA

Royal Numico/GNC Strategic Planning
2002—Boca Raton, FL

April Hill Farm, Appalachian Trail Center
1990—S. Egermont, MA

East Cambridge Land Trust
1990—Cambridge, MA

New England Small Farm Institute
1988—Belchertown, MA

GID: Amesbury Development
1987—Amesbury, MA

GID: Avis Factory Homes
1987—Avis, PA

Tisbury-Vineyard Haven
1986—Martha's Vineyard, MA

Channing House, Arlington Street Church
1986—Boston, MA

Newburyport Waterfront Development
1986—Newburyport, MA

Riverbend Office Park
1986—Watertown, MA

Architectural Heritage
1985—Boston, MA

Beacon Street Building
1985—Somerville, MA

Feasibility Studies (continued)

GID: Hull Redevelopment Authority
1985—Hull, MA

MGM Building
1985—Boston, MA

GID: Bosworth Development
1985—Boston, MA

GID: Brookline Development
1985—Brookline, MA

Residential: Custom Homes

Bouley Residence
2004—S. Kent, CT

Horn Residence
2003—Boca Raton, FL

Lorenzini Residence
2003(D)—Mercer Isl., WA

Estler Residence
2001(D)—Costa Rica

Duncan Residence
2002—Whitefish, MT

Upchurch Home
2002—Fort Worth, TX

Jost-Binder Residence
2000—South Kent, CT

Schuman-Behner Home
2000—Durango, CO

M. Upchurch Retreat
1999—Fort Worth, TX

J. Upchurch Residence
1998(D)—Fort Worth, TX

Duncan Retreat
1998(D)—Redmond, WA

Duncan Farm
1995(D)—Redmond, WA

Flores Residence
1994(D)—Kirkland, WA

Ross-Beattie Residence
1994(D)—Black Point, WA

Condit Residence
1993—North Bend, WA

Jones Vacation House
1992(D)—Whidbey, WA

Drislane Guest House
1990(D)—Beverly, MA

Wallace Vacation House
1991(D)—Newry, ME

Residential: Custom Homes (continued)

Hamilton Residence
1988—Carlisle, MA

Lordan Residence
1987(D)—Hamilton, MA

Swain Residence
1987—Marblehead, MA

Truslow Residence
1986—St. John, Virgin Islands

Beinecke Residence
1985—Williamstown, MA

Shapiro Residence
1985—Manchester, MA

Wallace Guest House
1985(D)—Edgartown, MA

Barmann Residence
1984(D)—Hollis, NH

(D) *Design services only
Project not built to date*

Residential: Architectural Interiors

Phinney Ridge Project
2001—Seattle, WA

Duncan Resizdence
2002(D)—Whitefish, MT

Upchurch Home
2002—Fort Worth, TX

Lorenzini Residence
2001—Mercer Isl., WA

Swain Retreat
1999—Seattle, WA

Westbrook Home
1999—San Anselmo, CA

Duncan Retreat
1998(D)—Redmond, WA

Duncan Farm
1995(D)—Redmond, WA

Watson Play Loft
1997—Seattle, WA

MacIntosh Residence
1993—Redmond, WA

Jones Residence
1992—Seattle, WA

Stanford Residence
1991—Seattle, WA

Truitt Loft
1989(D)—Boston, MA

Keane Residence
1988—Jamaica Plain, MA

Karp Residence
1986—Newton, MA

Burnette Residence
1985—Boston, MA

Shapiro Residence
1985—Manchester, MA

Todd Residence
1985—Boston, MA

Residential: Architectural Interiors (continued)

Cummer-Lyle Residence
1984—Cambridge, MA

Lack Residence
1984—Boston, MA

Olmsted-Derby Residence
1983(D)—Boston, MA

Jakuc Residence
1981—Boston, MA

Zimarro Residence
1981—Jamaica Plain, MA

Rodriguez Residence
1979—Boston, MA

Residential: Additions & Renovations

Cornfield Residence
2004—Seattle, WA

Benson Residence
2004—Seattle, WA

Tanner Residence
2004—Seattle, WA

Condit Guesthouse
2004—Redmond, WA

Jones Residence
2003—Seattle, WA

Sutherland Residence
2001—Seattle, WA

Condit Storybook Farm Barn Renovations
2000—Redmond, WA

Freshley-Hess Home
2000—Seattle, WA

Swain Retreat
1999—Seattle, WA

Creatura Residence
1995—Fox Island, WA

Eckert Residence
1995—W Seattle, WA

Miner-Miller Residence
1995—Bellevue, WA

Moudon-Seferis Home
1995—Seattle, WA

Gibson-Braden Residence
1994(D)—Seattle, WA

Jones Residence
1994—W Seattle, WA

Moudon-Seferis Boat House
1994—Seattle, WA

Blanchard-Sutton Residence
1993—Seattle, WA

**Residential:
Additions & Renovations (continued)**

Coluska Residence
1993—Seattle, WA

MacIntosh Residence
1993—Redmond, WA

Seferis Houseboat
1993—Seattle, WA

Hunt Residence
1992—Seattle, WA

Rayfield Residence
1992—Seattle, WA

Rhodes-Sorensen House
1992—Seattle, WA

Wahl Residence
1992(D)—Seattle, WA

Daniel Residence
1991—Seattle, WA

M. Kellogg,
April Hill Farm
1991—S. Egermont, MA

Irl Wallace Residence
1991(D)—Gallup, NM

Berry Residence
1990—North Easton, MA

Giles Residence
1990—Framingham, MA

Bruno Villa
1989(D)—Cohasset, MA

McKinnon Main House
1988—Argyle, NS, Canada

McKinnon Guest House
1988—Argyle, NS, Canada

Boyd Residence
1987(D)—Sudbury, MA

Jacques Residence
1987(D)—Wayland, MA

Russo Residence
1987—Boston, MA

**Residential:
Additions & Renovations (continued)**

Oreskovic Residence
1986—Marblehead, MA

Agee Residence
1985(D)—Osterville, MA

Barbour Residence
1985—Framingham, MA

Clancy Residence
1985—Winchester, MA

Norton Residence
1985—Cambridge, MA

Scholnick Residence
1985(D)—Boston, MA

Andrus Residence
1984—Winchester, MA

Keppleman Residence
1984(D)—Litchfield, CT

Licht Residence
1984—Lexington, MA

Bader Residence
1983—St. Petersburg, FL

Harsch Residence
1983—Williamstown, MA

Kittredge Residence
1982(D)—Canterbury, NH

Knight Residence
1982—Cambridge, MA

DiPietro Residence
1981(D)—Brookline, MA

Porter Residence
1979—Hyannis, MA

Scardino Residence
1979—Boston, MA

Rankin Residence
1977(D)—Falmouth, MA

Ellen & Pete Swain Home
1977—Falmouth, MA

**Residential:
Multi-Family
Urban**

Putnam Hall
1989—Orange, MA

776-780 Tremont Street
1987—Boston, MA

Newburyport,
Waterfront Development
1987(D)—Newburyport, MA

1045 Hollins Street
1986—Baltimore, MD

1047 Hollins Street
1986—Baltimore, MD

Market Mews Townhouses,
1100 Hollins Street
1986—Baltimore, MD

1204 Hollins Street
1986—Baltimore, MD

1206 Hollins Street
1986—Baltimore, MD

1208 Hollins Street
1986—Baltimore, MD

1210 Hollins Street
1986—Baltimore, MD

1213 Hollins Street
1986—Baltimore, MD

1217 Hollins Street
1986—Baltimore, MD

1219 Hollins Street
1986—Baltimore, MD

1221 Hollins Street
1986—Baltimore, MD

1223 Hollins Street
1986—Baltimore, MD

1225 Hollins Street
1986—Baltimore, MD

1227 Hollins Street
1986—Baltimore, MD

**Residential:
Multi-Family
Urban (continued)**

1229 Hollins Street
1986—Baltimore, MD

1231 Hollins Street
1986—Baltimore, MD

1233 Hollins Street
1986—Baltimore, MD

1235 Hollins Street
1986—Baltimore, MD

1237 Hollins Street
1986—Baltimore, MD

1307 Hollins Street
1986—Baltimore, MD

1321 Hollins Street
1986—Baltimore, MD

1322 Hollins Street
1986—Baltimore, MD

1328 Hollins Street
1986—Baltimore, MD

1332 Hollins Street
1986—Baltimore, MD

51 Arlington Street
1986—Baltimore, MD

15 S. Arlington Street
1986—Baltimore, MD

20 S. Arlington Street
1986—Baltimore, MD

17 Lancaster Street
1985—Cambridge, MA

27 Greenwich Park
1982—Boston, MA

601 Tremont Street
1981—Boston, MA

92 Waltham Street
1981—Boston, MA

7 Concord Square
1980(D)—Boston, MA

**Residential:
Multi-Family
Urban (continued)**

10 Concord Square
1980—Boston, MA

12 Concord Square
1980(D)—Boston, MA

36 Claremont Park
1979—Boston, MA

163 College Avenue
1979(D)—Somerville, MA

90 Putnam Avenue
1979—Cambridge, MA

18 Lancaster Street
1978—Cambridge, MA

(D) *Design services only
Project not built to date*

**Residential:
Multi-Family
Suburban/Rural**

Windsor Gardens
1990—Norwood, MA

Hall Estate Community,
Phase II
1990(D)—Hull, MA

Windsor Gardens
1989—Islip, NY

Hall Estate Community
1989—Hull, MA

North Shaker Village
1989—Enfield, NH

Butler Two Family
1988—Yarmouth, Nova Scotia

Dyer Cove
1987(D)—Franklin, NH

Gedney Farm
1987(D)—New Marlborough, MA

Shaker Landing
1987—Enfield, NH

Deer Point
1986(D)—Moultonboro, NH

Bay Farms
1985(D)—Duxbury, MA

Samoset at
Winnepesaukee
1983—Gilford, NH

**Residential:
Landscape
Design**

Jones Residence
2003—Seattle, WA

Horn Landscape
2003—Boca Raton, FL

Phinney Project
2002—Seattle, WA

Condit
Storybook Farm
2002—Redmond, WA

Duncan Residence
2002—Whitefish, MT

Upchurch Home
2002—Fort Worth, TX

Lorenzini Residence
2001—Mercer Isl., WA

Jost-Binder Residence
2000—South Kent, CT

Schuman-Behner Home
2000—Durango, CO

Swain Retreat
1993—Seattle, WA

Duncan Farm
1995(D)—Redmsod, WA

Duncan Retreat
1995(D)—Redmsod, WA

Griot Residence
1995—Fox Island, WA

Flores Residence
1994(D)—Kirkland, WA

Jones Residence
1994—W. Seattle, WA

Swain Residence
1993—Seattle, WA

Jones Residence
1992—Seattle, WA

**Residential:
Landscape
Design (continued)**

Drislane Residence
1991—Beverly, MA

Hall Estate Community
1989—Hull, MA

Bruno Villa
1989(D)—Cohasset, MA

Lordan Residence
1987(D)—Hamilton, MA

Hamilton Residence
1986—Carlisle, MA

Swain Residence
1986—Marblehead, MA

Bay Farm Community
1985(D)—Duxbury, MA

Norton Residence
1985—Cambridge, MA

Shapiro Residence
1985—Manchester, MA

Lack Residence
1984—Boston, MA

Bader Residence
1983—St. Petersburg, FL

Samoset at Winnepesaukee
1983—Gilford, NH

Jakuc Residence
1981—Boston, MA

Licht Residence
1981—Lexington, MA

18 Lancaster Street
1978—Cambridge, MA

**Residential:
Master/Site
Planning**

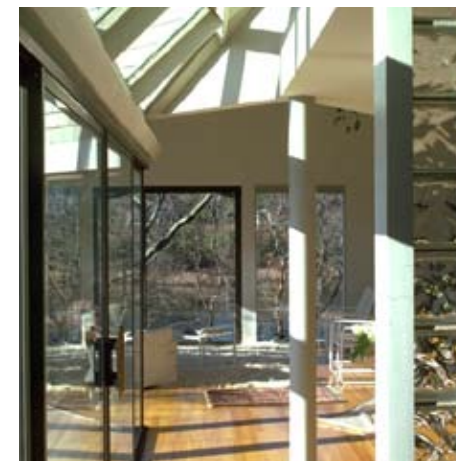
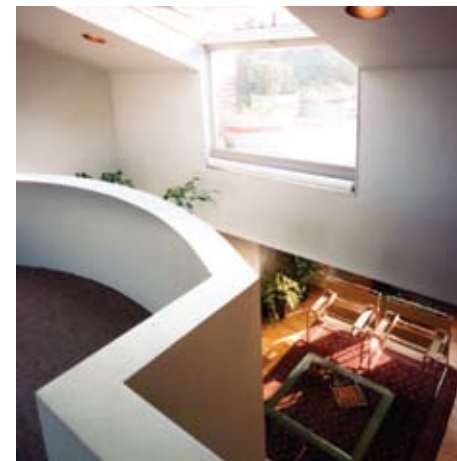
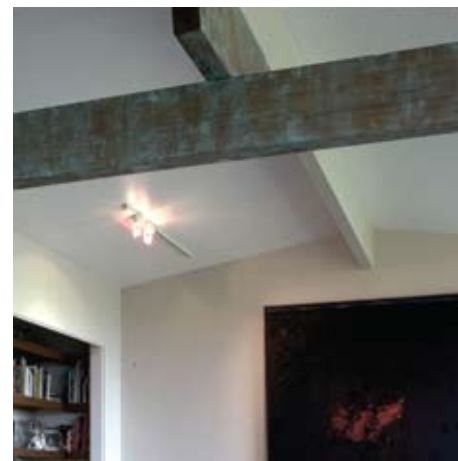
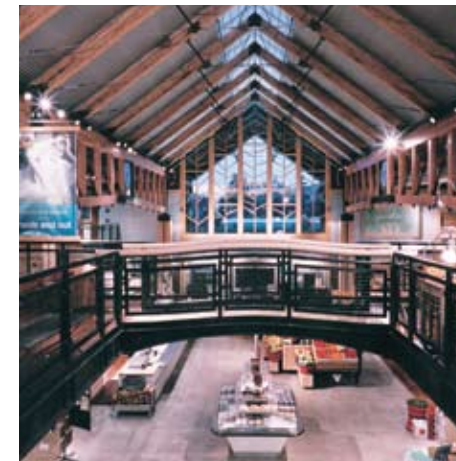
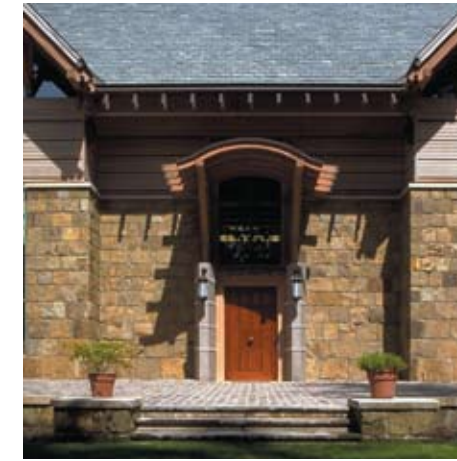
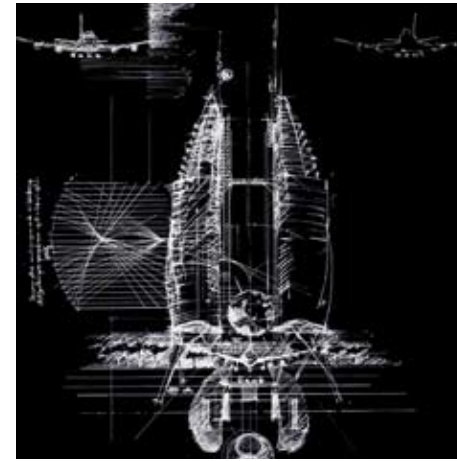
- Condit
Storybook Farm
2001—Redmond, WA
- Rhodes Decatur Retreat
2000—Decatur, WA
- Duncan Residence
2002—Whitefish, MT
- Upchurch Home
2002—Fort Worth, TX
- Lorenzini Residence
2001—Mercer Isl., WA
- Sutherland Residence
2001—Seattle, WA
- Freshley-Hess Home
2000—Seattle, WA
- Jost-Binder Residence
2000—South Kent, CT
- Schuman-Behner Home
2000—Durango, CO
- Creatura Residence
1995—Fox Island, WA
- Eckert Residence
1995—W Seattle, WA
- Miner-Miller Residence
1995—Bellevue, WA
- Swain Retreat
1993—Seattle, WA
- Duncan Farm
1995(D)—Redmond, WA
- Duncan Retreat
1995(D)—Redmond, WA
- Griot Residence
1995—Fox Island, WA
- Condit Residence
1993—North Bend, WA

**Residential:
Master/Site
Planning (continued)**

- Jones Vacation House
1993—Whidbey, WA
- Astrid Curtis
1990—Swan Island, ME
- Hall Estate Community
1989—Hull, MA
- Newton
Mixed-Use Project,
General Investment and
Development Co.
1989—Newton, MA
- Land Planning &
Management Foundation, Inc.
1987—Concord, MA
- McKinnon's Neck
Conservation Trust
1988—Argyle, NS, Canada
- Dyer Cove
1986—Franklin, NH
- Newburyport,
Waterfront Development
1986(D)—Newburyport, MA
- Bay Farms
1985(D)—Duxbury, MA
- The Farm
1984(D)—Laconia, NH
- Deer Point
1984—Moultonboro, NH
- Hoka Lea
1984—Kukuihaele, HI
- Samoset at Winnepesaukee
1982—Gilford, NH

Miscellaneous

- K. B. Swaim Deck
1990(D)—Cambridge, MA
- Moore Painting Studio
1990(D)—Sewanee, TN
- Conway Design Associates
1989—Conway, MA
- First Night Boston:
Future 2076
1986—Boston, MA
- Hoka Lea Tent Structure
1984—Kukuihaele, HI
- Matarazzo Design
1981—Concord, NH
- Tanning Booth
Prototype
1980—Boston, MA
- Starr Photo Studio
1979—Ipswich, MA
- Fouser Painting Studio
1978—Ipswich, MA
- R. Smith Deck
1975—Tallahassee, FL



ROBERT
EDSON
SWAIN
ARCHITECTURE
|
DESIGN